



# FortiClient - XML Reference

VERSION 5.6.0

**FORTINET DOCUMENT LIBRARY**

<http://docs.fortinet.com>

**FORTINET VIDEO GUIDE**

<http://video.fortinet.com>

**FORTINET BLOG**

<https://blog.fortinet.com>

**CUSTOMER SERVICE & SUPPORT**

<https://support.fortinet.com>

**FORTIGATE COOKBOOK**

<http://cookbook.fortinet.com>

**FORTINET TRAINING SERVICES**

<http://www.fortinet.com/training>

**FORTIGUARD CENTER**

<http://www.fortiguard.com>

**END USER LICENSE AGREEMENT**

<http://www.fortinet.com/doc/legal/EULA.pdf>

**FEEDBACK**

Email: [techdocs@fortinet.com](mailto:techdocs@fortinet.com)



March 16, 2018

FortiClient 5.6.0 XML Reference

04-560-434766-20180316

# TABLE OF CONTENTS

<b>Change Log</b>	<b>5</b>
<b>Introduction</b>	<b>6</b>
<b>XML Configuration File</b>	<b>7</b>
FortiClient configuration	7
File structure	7
File extensions	7
Configuration file sections	7
Encrypted username and password	8
IP addresses	8
Boolean values	8
Meta data	8
System Settings	9
UI settings	9
Log settings	13
Proxy settings	16
Update settings	18
FortiProxy settings	21
Certificates settings	23
Endpoint Control	25
VPN	35
VPN options	35
SSL VPN	37
IPsec VPN	41
Antivirus	51
General options	51
Real-time protection	52
On-Demand scans	57
Scheduled scans	61
Email	64
Quarantine	65
Server	66
Single Sign-On Mobility Agent	67
Web Filtering	67
Application Firewall	74

Vulnerability Scan .....	79
Sandboxing .....	81
<b>FortiClient XML Configurations .....</b>	<b>84</b>
Design considerations .....	84
Input validation .....	84
Handling of password fields .....	84
Segment of configuration file .....	84
Client certificate .....	84
<b>Back Up or Restore the Configuration File .....</b>	<b>85</b>
Back up the full configuration file .....	85
Restore the full configuration file .....	85
Back up and restore command line utility commands and syntax .....	86
Add XML to advanced profiles in EMS .....	88
<b>Advanced Features .....</b>	<b>90</b>
Advanced features (Windows) .....	90
Connect VPN before logon (AD environments) .....	90
Create a redundant IPsec VPN .....	90
Priority based SSL VPN connections .....	91
Enabling VPN autoconnect .....	91
Enabling VPN always up .....	91
Advanced features (Mac OS X) .....	92
Create a redundant IPsec VPN .....	92
Priority based SSL VPN connections .....	92
Enabling VPN autoconnect .....	93
Enabling VPN always up .....	93
VPN tunnel & script (Microsoft Windows) .....	93
Feature overview .....	93
Map a network drive after tunnel connection .....	93
Delete a network drive after tunnel is disconnected .....	94
VPN tunnel & script (Mac OS X) .....	94
Map a network drive after tunnel connection .....	94
Delete a network drive after tunnel is disconnected .....	94

## Change Log

Date	Change Description
2017-06-15	Initial release of 5.6.0.
2017-09-13	Updated description of <exclusions> for AntiVirus to indicate wildcards and path variables are supported.
2017-11-23	Updated description of <prefer_dtls_tunnel>.
2017-11-27	Removed <corporate_id> because no longer used and updated description of <registration_password>.
2018-03-08	Removed <block_uncategorised> and <block_unrated> from <web-filter>.
2018-03-16	Removed WAN optimization because it's not supported.

# Introduction

This document provides an overview of FortiClient version 5.6.0 XML configuration.

---



This document was written for FortiClient (Windows) 5.6.0. Not all features described in this document are supported for FortiClient (Mac OS X) 5.6.0.

---



For more information on FortiClient installation and configuration, see the *FortiClient Administration Guide* available at [www.forticlient.com](http://www.forticlient.com) or in the Fortinet Document Library <http://docs.fortinet.com>.

---

This document includes the following chapters:

- [XML Configuration File on page 7](#)
- [FortiClient XML Configurations on page 84](#)
- [Back Up or Restore the Configuration File on page 85](#)
- [Advanced Features on page 90](#)

# XML Configuration File

## FortiClient configuration

### File structure

FortiClient supports importation and exportation of its configuration via an XML file. This section defines and describes the format of that file.

### File extensions

FortiClient supports the following four file types:

- `.conf`  
A plain-text configuration file.
- `.sconf`  
A secure (encrypted) configuration file.
- `.conn`  
A plain-text VPN connection configuration file.
- `.sconn`  
A secure (encrypted) VPN connection configuration file.

A configuration file can be generated from the settings page of FortiClient dashboard or by using the command-line program: `FCConfig.exe`, installed with FortiClient.

### Configuration file sections

The configuration file contains the following major sections:

- [Meta data on page 8](#)  
Basic data controlling the entire configuration file.
- [System Settings on page 9](#)  
General settings that are not specific to any of the modules listed below (or affects more than one module).
- [Endpoint Control on page 25](#)  
Endpoint control settings including: enable enforcement, off-net update, skip confirmation, disable unregister, and silent registration.
- [VPN on page 35](#)  
Global VPN, IPsec VPN, and SSL VPN settings.
- [Antivirus on page 51](#)

Antivirus settings including: FortiGuard Analytics, real-time protection, behavior when a virus is detected, and quarantine.

- [Single Sign-On Mobility Agent on page 67](#)  
Single Sign-On (SSO) mobility agent settings.
- [Web Filtering on page 67](#)  
Web Filtering settings including: logging, white list priority, maximum violations, rate IP addresses, profiles, Safe Search, and YouTube education filter.
- [Application Firewall on page 74](#)  
Application Firewall settings.
- [Vulnerability Scan on page 79](#)  
Vulnerability Scan settings.
- [Sandboxing on page 81](#)  
Sandbox Detection settings.

## Encrypted username and password

Several XML tag elements are named `<password>`. All such tags are always encrypted during configuration exports. For modified and imported configurations, FortiClient accepts either encrypted or plain-text passwords.

Here is an example of an encrypted password tag element. The password starts with *Enc*:

```
<password>Enc9b4e1aae22c65e638aed4e47fbd225256a3b7a24b53f8370d6bc3b9aa90cecd5086c995f05
49e944b4acc951e4844529c71d81280de2b951</password>
```

Several `<username>` XML tags also follow this format.

## IP addresses

IP address tag elements usually refer to IPv4 addresses. A fully qualified domain name (FQDN) may also be provided. Here are two examples:

- Single IP address: 74.196.82.243
- FQDN: www.fortinet.com

## Boolean values

Elements that determine if a feature is enabled or disabled use Boolean values. The configuration file accepts 0 for false and 1 for true.

## Meta data

All of the XML tags and data in a configuration file are contained inside the XML tag `<forticlient_configuration>`. An empty configuration file will look like this:

```
<?xml version="1.0" encoding="utf-8"?>
<forticlient_configuration>
</forticlient_configuration>
```



The first line of the file includes an XML version number as well as the encoding. This is the standard XML start tag.

The following meta data is supported:

```
<forticlient_version>5.4.1.0116</forticlient_version>
```

FortiClient version number if the file is exported from FortiClient.

```
<version>5.4</version>
```

Version of the configuration file.

```
<date>2016/05/20</date>
```

Date when the file was generated.

```
<partial_configuration>0</partial_configuration>
```

A flag that controls whether the configuration will be replaced or added in import/restore. Possible values are 0 or 1.

```
<os_version>windows</os_version>
```

Indicates whether this configuration is generated from Microsoft Windows or Mac OS X. Possible values are windows or MacOSX.

## System Settings

System settings are contained inside the `<system>` `</system>` XML tags. It includes the following subsections:

- [UI settings on page 9](#)
- [Log settings on page 13](#)
- [Proxy settings on page 16](#)
- [Update settings on page 18](#)
- [FortiProxy settings on page 21](#)
- [Certificates settings on page 23](#)

### UI settings

User interface related information are contained inside the `<ui>` `</ui>` XML tags.

```
<forticlient_configuration>
  <system>
    <ui>
      <ads>0</ads>
      <disable_backup>0</disable_backup>
      <default_tab>AV</default_tab>
      <flashing_system_tray_icon>1</flashing_system_tray_icon>
      <hide_system_tray_icon>0</hide_system_tray_icon>
      <suppress_admin_prompt>0</suppress_admin_prompt>
      <password>Encrypted/NonEncrypted_PasswordString</password>
      <culture-code>os-default</culture-code>
      <show_passcode>0</show_passcode>
      <gpu_rendering>0</gpu_rendering>
      <replacement_messages>
        <quarantine>
          <title>
```

```
        <title>
          <![CDATA[]]>
        </title>
      </title>
      <statement>
        <remediation>
          <![CDATA[]]>
        </remediation>
      </statement>
      <remediation>
        <remediation>
          <![CDATA[]]>
        </remediation>
      </remediation>
    </quarantine>
  </replacement_messages>
  <avatars>
    <enabled>[0|1]</enabled>
    <providers>
      <google>
        <clientid>
          <![CDATA[]]>
        </clientid>
        <clientsecret>
          <![CDATA[]]>
        </clientsecret>
        <redirecturl>
          <![CDATA[]]>
        </redirecturl>
      </google>
      <linkedin>
        <clientid>
          <![CDATA[]]>
        </clientid>
        <clientsecret>
          <![CDATA[]]>
        </clientsecret>
        <redirecturl>
          <![CDATA[]]>
        </redirecturl>
      </linkedin>
      <salesforce>
        <clientid>
          <![CDATA[]]>
        </clientid>
        <clientsecret>
          <![CDATA[]]>
        </clientsecret>
        <redirecturl>
          <![CDATA[]]>
        </redirecturl>
      </salesforce>
    </providers>
  </avatars>
</ui>
</system>
</forticlient_configuration>
```

The following table provides UI setting XML tags, the description, and the default value (where applicable).

XML Tag	Description	Default Value
<ads>	Advertisements (Dashboard Banner) in the FortiClient console are not displayed, even when set to 1. FortiClient ignores this setting. Boolean value: [0   1]	1
<disable_backup>	Enable or disable configuration backup from FortiClient console. Boolean value: [0   1]	1
<default_tab>	The tab selected by default on the FortiClient dashboard. Enter one of the following: <ul style="list-style-type: none"> <li>AV: Antivirus</li> <li>WF: Parental Control/Web Filtering</li> <li>FW: Application Firewall</li> <li>VPN: Remote Access</li> <li>VULN: Vulnerability Scan</li> </ul>	AV
<flashing_system_tray_icon>	Enable or disable the flashing system tray icon. The system tray flashes while FortiClient background processes are running. Boolean value: [0   1]	1
<hide_system_tray_icon>	Hide or display the system tray icon. Boolean value: [0   1]	0
<suppress_admin_prompt>	Do not ask for an administrator password for tasks that require super_user permission to complete. Boolean value: [0   1]	0
<password>	Enter a password to set the configuration lock upon registering with a FortiGate. Either encrypted or non-encrypted password.	

XML Tag	Description	Default Value
<culture-code>	The localized language used by the FortiClient dashboard. Enter one of the following: <ul style="list-style-type: none"> <li>os-default: Defaults to the operating system language</li> <li>de-de: German</li> <li>en-us: English (United States)</li> <li>es-es: Spanish (Spain)</li> <li>fr-fr: French (France)</li> <li>ja-jp: Japanese</li> <li>pt-br: Portuguese (Brazil)</li> <li>kr-kr: Korean</li> <li>zh-cn: Simplified Chinese</li> <li>zh-tw: Traditional Chinese</li> </ul>	os-default
<show_passcode>	Display <i>Passcode</i> instead of <i>Password</i> in the VPN tab on the FortiClient console. Boolean value: [0   1]	0
<gpu_rendering>	Enable or disable GPU rendering. Boolean value: [0   1]	0
<replacement_messages>	Displays a message in FortiClient when the endpoint is quarantined. You can customize the message.	
<avatars>	Contains the elements for configuring whether FortiClient retrieves an avatar picture for the endpoint user from web applications, such as Google, LinkedIn, or Salesforce.	
<enabled>	Enable or disable FortiClient to retrieve an avatar picture for the user from web applications, such as Google, LinkedIn, or Salesforce. Boolean value: [0   1]	
<providers>	Identifies which cloud applications FortiClient uses to retrieve an avatar picture for the endpoint users.	
<google>	Settings that allow FortiClient uses to retrieve an avatar picture from Google. Integration with Google requires a Google API Console project. For more information, see <a href="https://developers.google.com/">https://developers.google.com/</a> .	
<clientid>	Type the client ID for your Google API Console project.	

XML Tag	Description	Default Value
<code>&lt;clientsecret&gt;</code>	Type the client secret for your Google API Console project.	
<code>&lt;redirecturl&gt;</code>	Type the redirect URL for your Google API Console project.	
<code>&lt;linkedin&gt;</code>	Settings that allow FortiClient uses to retrieve an avatar picture from LinkedIn. Integration with LinkedIn requires knowledge of LinkedIn Developers. For more information, see <a href="https://developer.linkedin.com/">https://developer.linkedin.com/</a> .	
<code>&lt;clientid&gt;</code>	Type the client ID for LinkedIn.	
<code>&lt;clientsecret&gt;</code>	Type the client secret for LinkedIn.	
<code>&lt;redirecturl&gt;</code>	Type the redirect URL for LinkedIn.	
<code>&lt;salesforce&gt;</code>	Settings that allow FortiClient uses to retrieve an avatar picture from Salesforce. Integration with Salesforce requires knowledge of salesforce developers. For more information, see <a href="https://developer.salesforce.com/">https://developer.salesforce.com/</a> .	
<code>&lt;clientid&gt;</code>	Type the client ID for Salesforce.	
<code>&lt;clientsecret&gt;</code>	Type the client secret for Salesforce.	
<code>&lt;redirecturl&gt;</code>	Type the redirect URL for Salesforce.	

Following is an example replacement message:

```

<replacement_messages>
  <quarantine>
    <title>
      <![CDATA[Quarantined]]>
    </title>
    <statement>
      <![CDATA[Your system has been quarantined by %FortiGate% %serial
        number% (%ip address%).]]>
    </statement>
    <remediation>
      <![CDATA[Contact your system administrator for assistance.]]>
    </remediation>
  </quarantine>
</replacement_messages>

```

## Log settings

Log-related information will be inside the `<log_settings>` `</log_settings>` XML tags.

```
<forticlient_configuration>
```

```

<system>
  <log_settings>
    <onnet_local_logging>[0|1]</onnet_local_logging>
    <level>6</level>
    <log_events>ipsecvpn, sslvpn, scheduler, update, firewall, av, clientmanager, proxy, shield, webfilter, endpoint, fssoma, configd, vuln</log_events>
    <remote_logging>
      <log_upload_enabled>0</log_upload_enabled>
      <log_upload_server>0.0.0.0</log_upload_server>
      <log_upload_ssl_enabled>1</log_upload_ssl_enabled>
      <log_retention_days>90</log_retention_days>
      <log_upload_freq_minutes>90</log_upload_freq_minutes>
      <log_generation_timeout_secs>900</log_generation_timeout_secs>
      <log_compressed>0</log_compressed>
      <log_last_upload_date>0</log_last_upload_date>
      <log_protocol>syslog</log_protocol>
      <!-- faz | syslog -->
      <!-- server IP address -->
      <netlog_server>0.0.0.0</netlog_server>
      <netlog_categories>7</netlog_categories>
    </remote_logging>
  </log_settings>
</system>
</forticlient_configuration>

```

The following table provides provides log settings XML tags, the description, and the default value (where applicable).

XML Tag	Description	Default Value
<onnet_local_logging>	If client-log-when-on-net is enabled on EMS, EMS will send this XML element. Boolean value: [ 0   1 ]	
<level>	Select the FortiClient logging level. Enter one of the following: <ul style="list-style-type: none"> <li>0: emergency</li> <li>1: alert</li> <li>2: critical</li> <li>3: error</li> <li>4: warning</li> <li>5: notice</li> <li>6: information</li> <li>7: debug</li> </ul>	6

XML Tag	Description	Default Value
<code>&lt;log_events&gt;</code>	<p>FortiClient events or processes to log. One or more comma-separated list of:</p> <ul style="list-style-type: none"> <li><code>ipsecvpn</code>: IPsec VPN log events</li> <li><code>sslvpn</code>: SSL VPN log events</li> <li><code>firewall</code>: Application Firewall log events</li> <li><code>av</code>: Antivirus log events</li> <li><code>webfilter</code>: Web Filtering log events</li> <li><code>vuln</code>: Vulnerability Scan log events</li> <li><code>fssoma</code>: Single Sign-On (SSO) mobility agent for FortiAuthenticator log events</li> <li><code>scheduler</code>: Scheduler log events</li> <li><code>update</code>: Update log events</li> <li><code>proxy</code>: FortiProxy log events</li> <li><code>shield</code>: FortiShield log events</li> <li><code>endpoint</code>: Endpoint Control log events</li> <li><code>configd</code>: Configuration log events</li> <li><code>sandboxing</code>: Sandbox Detection events</li> </ul>	<p>ipsecvpn, sslvpn, scheduler, update, firewall, av, clientmanager , proxy, shield, webfilter, endpoint, fssoma, configd, vuln</p> <p>(enable all events by default)</p>
<p><code>&lt;remote_logging&gt;</code> elements</p> <p>All elements for <code>&lt;remote_logging&gt;</code> apply only to remote logs. The elements do not affect the behavior of local logs.</p>		
<code>&lt;log_upload_enabled&gt;</code>	Set the boolean value to 1 to upload FortiClient logs to the FortiAnalyzer or FortiManager. Boolean value: [0   1]	0
<code>&lt;log_upload_server&gt;</code>	Enter the IP address of the FortiAnalyzer or FortiManager to send logs to.	
<code>&lt;log_upload_ssl_enabled&gt;</code>	Enable or disable use of SSL protocol during log upload. Boolean value: [0   1]	1
<code>&lt;log_upload_freq_minutes&gt;</code>	The log frequency upload period in minutes.	90

XML Tag	Description	Default Value
<code>&lt;log_generation_timeout_sec&gt;</code>	How often logs are created in seconds.	900
<code>&lt;log_compressed&gt;</code>	Enable or disable compression of logs. Boolean value: [0   1]	
<code>&lt;log_retention_days&gt;</code>	If the server is not reachable, the number of days to retain the logs in the upload queue before being deleted. Local logs are not deleted.	90
<code>&lt;log_last_upload_date&gt;</code>	The date of the most recent log upload.	
<code>&lt;log_protocol&gt;</code>	Enter the remote server type: faz: FortiAnalyzer syslog: Syslog server	
<code>&lt;netlog_server&gt;</code>	Enter the IP address of the syslog server. Used only when <code>&lt;log_protocol&gt;</code> is set to syslog.	
<code>&lt;netlog_categories&gt;</code>	Enter of logs to upload. Bitmask: 1 = traffic logs 2 = vulnerability logs 4 = event logs Since these are bitmasks, you may combine as follows: 3 = 1 or 2 (traffic and vulnerability) 5 = 1 or 4 (traffic and event) 6 = 2 or 4 (vulnerability and event) 7 = 1 or 2 or 4 (all logs)	7



The FortiShield daemon protects FortiClient's own file system and registry settings from modification by unauthorized persons.

## Proxy settings

Proxy-related information are contained inside the `<proxy></proxy>` XML tags. If a proxy server configuration is required for Internet access, use the fields here to specify that configuration so that FortiClient's functions can use Fortinet's Internet based services. The settings are used by FortiClient originated traffic only.

```
<forticlient_configuration>
```



```

<system>
  <proxy>
    <update>0</update>
    <fail_over_to_fdn>0</fail_over_to_fdn>
    <online_scep>0</online_scep>
    <virus_submission>0</virus_submission>
    <type>http</type>
    <address></address>
    <port>80</port>
    <username>Encrypted/NonEncrypted_UsernameString</username>
    <password>Encrypted/NonEncrypted_PasswordString</password>
  </proxy>
</system>
</forticlient_configuration>

```

The following table provides proxy setting XML tags, the description, and the default value (where applicable).

XML Tag	Description	Default Value
<update>	Enable or disable updates. Set the boolean value to 1 if a proxy server exists between FortiClient and the Internet. Boolean value: [ 0   1 ]	0
<fail_over_to_fdn>	Enable or disable failover to FortiGuard servers. Boolean value: [ 0   1 ]	0
<online_scep>	Enable or disable Simple Certificate Enrollment Protocol (SCEP). Set the boolean value to 1 if you are using SCEP server and a proxy server exists between FortiClient and the SCEP server. Boolean value: [ 0   1 ]	0
<virus_submission>	Enable or disable virus submission to the FortiGuard Distribution Network (FDN). Set the boolean value to 1 if a SMTP proxy server exists between FortiClient and Fortinet's virus submission servers. Used when you <i>submit for analysis</i> or <i>submit as false positive</i> . Boolean value: [ 0   1 ]	0
<type>	The type of proxy being specified. Enter one of the following: <ul style="list-style-type: none"> <li>• HTTP</li> <li>• SOCKS4</li> <li>• SOCKS5</li> </ul>	HTTP
<address>	The address of the proxy server. IP address or FQDN.	
<port>	The port number of the proxy server. Port range: 1 to 65535	80

XML Tag	Description	Default Value
<code>&lt;username&gt;</code>	If the proxy requires authentication, specify the user-name here. Either encrypted or non-encrypted user name.	
<code>&lt;password&gt;</code>	If the proxy requires authentication, specify the password here. Either encrypted or non-encrypted password.	

## Update settings

Update-related information is contained inside the `<update></update>` XML tags. Use this field to specify how FortiClient performs updates from FortiGuard Distribution Network (FDN) servers.

```
<forticlient_configuration>
  <system>
    <update>
      <use_custom_server>0</use_custom_server>
      <server></server>
      <port>80</port>
      <fail_over_servers>server1.fortinet.com:8008;172.81.30.6:80;server2.fortinet.com:80</fail_over_servers>
      <timeout>60</timeout>
      <failoverport>8000</failoverport>
      <fail_over_to_fdn>1</fail_over_to_fdn>
      <use_proxy_when_fail_over_to_fdn>1</use_proxy_when_fail_over_to_fdn>
      <auto_patch>1</auto_patch>
      <update_action>notify_only</update_action>
      <scheduled_update>
        <enabled>1</enabled>
        <type>interval</type>
        <daily_at>03:00</daily_at>
        <update_interval_in_hours>3</update_interval_in_hours>
      </scheduled_update>
      </submit_virus_info_to_fds>
    </update>
  </system>
</forticlient_configuration>
```

The following table provides update setting XML tags, the description, and the default value (where applicable).

XML Tag	Description	Default Value
<code>&lt;use_custom_server&gt;</code>	Define a custom server for updates. When the boolean value is set to 0, use the default FDN server address. When the boolean value is set to 1, you must specify the address in <code>&lt;update&gt;&lt;server&gt;</code> . Typically used when specifying a FortiManager as your update server. Boolean value: [ 0   1 ]	0

XML Tag	Description	Default Value
<code>&lt;server&gt;</code>	IP address or FQDN of the update server. Use when <code>&lt;update&gt;&lt;use_custom_server&gt;</code> is set to 1. Optionally, you can specify the port number. Multiple addresses can be specified using a semicolon delimited list. For example, 10.10.10.1:80;10.10.10.2:8080;172.16.10.80;www-.myfortimanager.net. If this example, FortiClient will try each server specified in order until one works, or they all fail.	
<code>&lt;port&gt;</code>	Port number of the update server. If a port number is not specified in <code>&lt;update&gt;&lt;server&gt;</code> , this port will be used. Port range: 1 to 65535	80
<code>&lt;fail_ over_ server s&gt;</code>	Update servers to try if the primary server could not be reached. Separate multiple servers with a semicolon. IP address or FQDN, followed by a colon and the port number if applicable.	
<code>&lt;timeout&gt;</code>	Connection timeout, in seconds, when attempting to reach a custom update server. If a server is reachable but not responding to update requests, the actual timeout will be longer. The timeout specified is applied three times to one <code>&lt;server&gt;:&lt;port&gt;</code> pair before FortiClient gives up on this pair. If <code>&lt;fail-overport&gt;</code> is specified, and greater than 0, there are a total of six attempts (three attempts for <code>&lt;server&gt;:&lt;port&gt;</code> , three attempts for <code>&lt;server&gt;:&lt;failoverport&gt;</code> ).	60
<code>&lt;failoverp ort&gt;</code>	Failover port number. If the update server cannot be reached via the port specified in <code>&lt;update&gt;&lt;server&gt;</code> or <code>&lt;update&gt;&lt;port&gt;</code> , FortiClient will try the same address with this port. Port range: 1 to 65535	8000
<code>&lt;fail_ over_ to_ fdn&gt;</code>	Determines whether or not to use FortiGuard servers if communication with custom <code>&lt;server&gt;</code> fails. If the boolean value is set to 1, <code>&lt;update&gt;&lt;use_custom_server&gt;</code> is set to 1, and the update server specified by <code>&lt;update&gt;&lt;server&gt;</code> cannot be reached, then FortiClient will try the default public FDN server. This is tried only if FortiClient has exhausted all other custom update server options. Boolean value: [0   1]	1

XML Tag	Description	Default Value
<code>&lt;use_proxy_when_fail_over_to_fdn&gt;</code>	Supports failover to FortiGuard servers if FortiClient uses a proxy server defined with <code>&lt;forticlient_configuration&gt;&lt;system&gt;&lt;proxy&gt;</code> and <code>&lt;fail_over_to_fdn&gt;</code> is set to 1. Set <code>&lt;use_proxy_when_fail_over_to_fdn&gt;</code> to 1 to fail over to FortiGuard servers. This element is ignored when no proxy server is defined with <code>&lt;forticlient_configuration&gt;&lt;system&gt;&lt;proxy&gt;</code> . Boolean value: [0   1]	1
<code>&lt;auto_patch&gt;</code>	Determines whether to automatically check for software updates. Used with <code>&lt;update_action&gt;</code> . If the boolean value is set to 1, FortiClient automatically checks for updates and takes the action specified by <code>&lt;update_action&gt;</code> . Boolean value: [0   1]	0
<code>&lt;update_action&gt;</code>	Update action applies to software updates only. FortiClient Mac supports only the <code>notify_only</code> and <code>disable</code> options. Select one of the following: <ul style="list-style-type: none"> <li><code>download_and_install</code>: Automatically downloads and installs software updates with no user intervention. It will reboot the computer if needed. FortiClient Mac does not support.</li> <li><code>download_only</code>: Automatically downloads software updates, but does not install them. The user can install by following the message prompt. FortiClient Mac does not support.</li> <li><code>notify_only</code>: Displays a message when a software update becomes available. The user triggers the update by following the message prompt.</li> <li><code>disable</code>: Disables online software updates. Software updates can only be achieved by manually downloading and installing newer installation packages.</li> </ul>	notify_only
<code>&lt;scheduled_update&gt;</code> elements  Use these elements to define when FortiClient should look for engine, signature and software updates (if enabled).		
<code>&lt;enabled&gt;</code>	Enable or disable scheduled updates. When the boolean value is set to 1, scheduled update is enabled. When set to 0, scheduled update is disabled. Boolean value: [0   1]	1
<code>&lt;type&gt;</code>	Update frequency: daily or at regular intervals. Select one of the following: <ul style="list-style-type: none"> <li><code>daily</code></li> <li><code>interval</code></li> </ul>	interval

XML Tag	Description	Default Value
<code>&lt;daily_at&gt;</code>	Time of the day, in the format HH:MM (24-hour clock), this field is mandatory if the <code>&lt;type&gt;</code> tag is set to daily. This field specifies the time that FortiClient should check for updates.	
<code>&lt;update_interval_in_hours&gt;</code>	Update interval in hours if the <code>&lt;type&gt;</code> tag is set to interval. This field specifies the frequency that FortiClient should check for updates. The minimum value is 1, the maximum value is 24.	3
<code>&lt;submit_virus_info_to_fds&gt;</code>	Enable or disable submission of virus information to FortiGuard. Boolean value: [0   1]	3

When `<use_custom_server>` is 0 or both `<server>` and `<fail_over_servers>` are each an empty (NULL) string, FortiClient will only use the default FortiGuard server for software updates. If a string is specified in `<server>` and communication fails with that server, each of the servers specified in `<fail_over_servers>` are tried until one succeeds. If that also fails, then software updates will not be possible unless `<fail_over_to_fdn>` is set to 1.

If communication fails with the server(s) specified in both `<server>` and `<fail_over_servers>`, `<fail_over_to_fdn>` determines the next course of action as listed below:

<code>&lt;server&gt;</code>	<code>&lt;fail_over_to_fdn&gt;</code>	Result
"" (empty strings)	0	Only FortiGuard server is used.
"" (empty strings)	1	Only FortiGuard server is used.
"xyz" (valid IP address)	0	FortiGuard server is never used.
"xyz" (valid IP address)	1	FortiGuard server is used only as failover.

## FortiProxy settings

FortiProxy information is contained inside the `<fortiproxy></fortiproxy>` XML tags. FortiProxy is responsible for HTTP/HTTPS filtering and SMTP/POP3 antivirus scanning. Use these settings to configure FortiProxy's behavior.

```
<forticlient_configuration>
  <system>
    <fortiproxy>
      <enabled>1</enabled>
      <enable_https_proxy>1</enable_https_proxy>
      <http_timeout>60</http_timeout>
      <client_comforting>
```

```

        <pop3_client>1</pop3_client>
        <pop3_server>1</pop3_server>
        <smtp>1</smtp>
    </client_comforting>
    <selftest>
        <enabled>0</enabled>
        <last_port>-172</last_port>
        <notify>0</notify>
    </selftest>
</fortiproxy>
</system>
</forticlient_configuration>

```

The following table provides FortiProxy XML tags, the description, and the default value (where applicable).

XML Tag	Description	Default Value
<enabled>	Enable or disable FortiProxy. When the boolean value is set to 0, FortiProxy is disabled. HTTP/HTTPS filtering and SMTP/POP3 antivirus scanning are disabled. Boolean value: [ 0   1 ]	1
<enable_https_proxy>	Enable or disable HTTPS proxy. When the boolean value is set to 0, FortiProxy is unable to perform filtering on HTTPS traffic. Boolean value: [ 0   1 ]	1
<http_timeout>	Connection timeout in seconds. FortiProxy will determine if the remote server is available based on this timeout value. Lower this timeout value if your client requires a faster fail response.	60
<b>&lt;client_comforting&gt; elements</b>  Some types of email clients require continuous response from the server or a connection error may be triggered. Use these settings to enable or disable this feature.		
<pop3_client>	Enable or disable POP3 client comforting. Client comforting helps to prevent POP3 clients from complaining that the server has not responded in time. Boolean value: [ 0   1 ]	1
<pop3_server>	Enable or disable POP3 server comforting. Server comforting helps to prevent POP3 servers from complaining that the client has not responded in time. Example, where FortiClient is installed on a mail server. Boolean value: [ 0   1 ]	1
<smtp>	Enable or disable SMTP client comforting. SMTP comforting helps to prevent SMTP clients from complaining that the server has not responded in time. Boolean value: [ 0   1 ]	1

XML Tag	Description	Default Value
<code>&lt;selftest&gt;</code> elements <p>FortiProxy can detect if other software is disrupting internal traffic between FortiProxy's internal modules. It does this by sending packets periodically to 1.1.1.1, which are intercepted by FortiClient and dropped (they never leave the computer). If the packets are not detected, then it is deemed highly likely that third party software is intercepting the packets, signaling that FortiProxy is not able to perform regular traffic filtering.</p>		
<code>&lt;enabled&gt;</code>	Enable or disable self tests. FortiProxy periodically checks its own connectivity to determine if it is able to proxy other applications traffic. Boolean value: [ 0   1 ]	1
<code>&lt;last_port&gt;</code>	Last port number used. This is the highest port number you want to allow FortiProxy to listen on. Use to prevent FortiProxy from binding to another port that another service normally uses. Port range: 65535 to 10000	65535
<code>&lt;notify&gt;</code>	When the boolean value is set to 1, the user will see a bubble notification when self-testing detects that HTTP/HTTPS filtering and SMTP/POP3 antivirus scanning have been blocked by a third party program. Boolean value: [ 0   1 ]	1

## Certificates settings

Certificates are contained in the `<certificates>` `</certificates>` XML tags. Following are the subsections:

- CRL  
Uses Online Certificate Status Protocol (OCSP).
- HDD
- CA certificate  
Base 64 encoded CA certificate.

```

<forticlient_configuration>
  <system>
    <certificates>
      <crl>
        <ocsp />
      </crl>
      <hdd />
      <ca />
      <common_name>
        <match_type>
          <![CDATA[simple]]>
        </match_type>
        <pattern>
          <![CDATA[w8.fct.net]]>
        </pattern>
      </common_name>
    </certificates>
  </system>
</forticlient_configuration>

```

```

    </common_name>
    <issuer>
      <match_type>
        <![CDATA[simple]]>
      </match_type>
    </pattern>
      <![CDATA[Subordinate CA]]>
    </pattern>
  </issuer>
</certificates>
</system>
</forticlient_configuration>

```

The following table provides certificates XML tags, the description, and the default value (where applicable).

XML Tag	Description	Default Value
<crl><OCSP> elements		
<enabled>	Use Online Certificate Status Protocol (OCSP). Boolean value: [0   1]	
<server>	Enter the server IP address.	
<port>	Enter the server port number.	
<common_name> elements	elements for common name of the certificate that will be automatically selected for VPN logon.	
<match_type>	Enter the type of matching to use, for example, <match_type><![CDATA[simple]]></match_type>. Choose from: <ul style="list-style-type: none"> <li>• simple: exact match</li> <li>• wildcard: wildcard</li> <li>• regex: regular expression</li> </ul>	
<pattern>	Enter the pattern to use for the type of matching, for example, <pattern><![CDATA[w8.fct.net]]></pattern>.	
<issuer> elements	elements about the issuer of the certificate that will be automatically selected for VPN logon.	
<match_type>	Enter the type of matching to use, for example, <match_type><![CDATA[simple]]></match_type>. Choose from: <ul style="list-style-type: none"> <li>• simple: exact match</li> <li>• wildcard: wildcard</li> <li>• regex: regular expression</li> </ul>	
<pattern>	Enter the pattern to use for the type of matching, for example, <pattern><![CDATA[subordinate CA]]></pattern>.	

Following is an example of exact match for <common\_name>:



```

<certificate>
  <common_name>
    <match_type>
      <![CDATA[simple]]>
    </match_type>
    <pattern>
      <![CDATA[w8.fct.net]]>
    </pattern>
  </common_name>

```

Following is an example of wildcard for <common\_name>:

```

<certificate>
  <common_name>
    <match_type>
      <![CDATA[wildcard]]>
    </match_type>
    <pattern>
      <![CDATA[* .fct.net]]>
    </pattern>
  </common_name>

```

Following is an example of regular expression for <common\_name>:

```

<certificate>
  <match_type>
    <![CDATA[regex]]>
  </match_type>
  <pattern>
    <![CDATA[.*]]>
  </pattern>
</common_name>

```

## Endpoint Control

Endpoint Control configuration elements are usually downloaded from FortiGate or FortiClient EMS after FortiClient registers to the same FortiGate or FortiClient EMS. When FortiClient registers to FortiGate/EMS, it is connecting Telemetry to FortiGate/EMS. There are two sections:

- Endpoint Control general attributes. These are contained in the <endpoint\_control> </endpoint\_control> XML tags.
- Configuration details relating to specific FortiClient services, such as Antivirus, Web Filtering, Application Firewall, Vulnerability Scanner, and so on. These will be found in the respective configuration elements of the services affected.

Endpoint control general attributes are listed below.

```

<forticlient_configuration>
  <endpoint_control>
    <checksum></checksum>
    <enabled>1</enabled>
    <socket_connect_timeouts>1:5</socket_connect_timeouts>
    <custom_ping_server></custom_ping_server>
  </endpoint_control>
</forticlient_configuration>

```

```

<system_data>Encrypted_String</system_data>
<disable_unregister>0</disable_unregister>
<disable_fgt_switch>1</disable_fgt_switch>
<keepalive_short_timeout>20000</keepalive_short_timeout>
<keepalive_timeout>1800</keepalive_timeout>
<ping_server>172.17.61.178:8010</ping_server>
<fgt_name>FG_Hostname</fgt_name>
<fgt_sn>Encrypted_Serial_Number_String</fgt_sn>
<offnet_update>1</offnet_update>
<user>Encrypted_UsernameString</user>
<skip_confirmation>0</skip_confirmation>
<fgt_logoff_on_fct_shutdown>1</fgt_logoff_on_fct_shutdown>
<show_bubble_notifications>1</show_bubble_notifications>
<conf_rcv_time></conf_rcv_time>
<vdom>root</vdom>
<silent_registration>0</silent_registration>
<notify_fgt_on_logoff>1</notify_fgt_on_logoff>
<fgt_
  list>Enc256828d1e23febfa0b789324ea1fc9cf45acdc8af3888e7aa26677825bbf8d5d123fc
  bc2884f3cb3f2a03b5414ab01e6a6c22762add0c4f209224f052dec29491e1d15eee4a1a290a8
  1b367c3d4a5251258ed14921e231547f52d9e3</fgt_list>
<ui>
  <display_antivirus>1</display_antivirus>
  <display_sandbox>1</display_sandbox>
  <display_webfilter>1</display_webfilter>
  <display_firewall>1</display_firewall>
  <display_vpn>1</display_vpn>
  <display_vulnerability_scan>1</display_vulnerability_scan>
  <registration_dialog>
    <show_profile_details>1</show_profile_details>
  </registration_dialog>
</ui>
<onnet_addresses>
  <address>1.1.1.0/255.255.255.0</address>
</onnet_addresses>
<onnet_mac_addresses>
  <address>00:00:00:00:00:00</address>
</onnet_mac_addresses>
<alerts>
  <notify_server>1</notify_server>
  <alert_threshold>1</alert_threshold>
</alerts>
<fortigates>
  <fortigate>
    <serial_number></serial_number>
    <name></name>
    <registration_password></registration_password>
    <addresses></addresses>
  </fortigate>
</fortigates>
<notification_server>
  <address>172.17.60.26:8013</address>
</notification_server>
<nac>
  <processes>
    <process id="1" name="MS Word">
      <signature name="processname.exe">SHA256 of file</signature>
    </processes>
  </nac>

```

```

        <signature name="processname.exe">SHA256 of file</signature>
      </process>
      <process id="2" name="FortiToken">
        <signature name="processname2.exe">SHA256 of file</signature>
      </process>
    </processes>
    <files>
      <path id="1">Path to folder/file</path>
      <path id="2">Path to folder/file</path>
    </files>
    <registry>
      <path id="1">path to 32bit registry key</path>
      <path id="2">path to 32bit registry value</path>
    </registry>
  </nac>
</endpoint_control>
</forticlient_configuration>

```

The following table provides endpoint control XML tags, the description, and the default value (where applicable).

XML Tag	Description	Default Value
<checksum>	Configuration checksum calculated on and enforced by FortiGate and EMS.	
<enabled>	Enable endpoint control.	
<system_data>	Endpoint control system information. This element is protected and is not intended to be changed.	
<socket_connect_timeouts>	Probe timeout for endpoint control registration and keep-alive message timeout in seconds. probe_timeout:keep_alive_timeout Changing socket connect time outs might affect performance.	1:5
<keepalive_short_timeout>	Short keepalive timeout in milliseconds (ms).	20000
<keepalive_timeout>	Keepalive timeout in seconds.	1800
<custom_ping_server>	The IP address or FQDN of the custom PING server.	
<ping_server>	The IP address or FQDN of the PING server. FortiClient updates this tag when it registers to FortiGate or EMS. Edits to this tag will be overwritten by FortiClient. This field can be safely deleted.	

XML Tag	Description	Default Value
<fgt_name>	The name of the FortiGate (FortiGate Hostname) or EMS that FortiClient is currently registered to (if any). FortiClient updates this tag when it registers to the FortiGate or EMS. Edits to this tag will be overwritten by FortiClient. This field can be safely deleted.	
<fgt_sn>	The encrypted serial number of the registered FortiGate or EMS (if any). Do not edit this field. This field can be safely deleted.	
<offnet_update>	Enable or disable synchronization of configuration updates from the FortiGate or EMS. Boolean value: [0   1]	1
<user>	Encrypted user name.	
<skip_confirmation>	Do not prompt user before proceeding to complete registration with FortiGate or EMS. Boolean value: [0   1]	0
<disable_unregister>	Prevent a registered client from being able to unregister after successfully registering to FortiGate or EMS. Boolean value: [0   1] When this setting is configured as 1, the FortiClient user is unable to unregister from the FortiGate or EMS after initial registration. This XML setting is intended to be used with <silent_registration>. If <i>Enable Registration Key for FortiClient</i> is enabled on FortiGate or EMS, configure this password in the <registration_password> XML tag, and enter the IP address or addresses of the FortiGate or EMS in the <addresses> XML tag.	0

XML Tag	Description	Default Value
<code>&lt;disable_fgt_switch&gt;</code>	<p>Enable or disable the disabling of the FortiGate switch. Boolean value: [0   1]</p> <p>This XML setting intended for use with <code>&lt;silent_registration&gt;</code> and <code>&lt;disable_unregister&gt;</code>. If Enable Registration Key for FortiClient is enabled on the FortiGate, configure this password in the <code>&lt;registration_password&gt;</code> XML tag and enter the IP address or addresses of the FortiGate in the <code>&lt;addresses&gt;</code> XML tag.</p> <p>When <code>&lt;disable_fgt_switch&gt;</code> is configured as 1, the FortiGate switch is disabled. As a result:</p> <ul style="list-style-type: none"> <li>• FortiClient does not probe default gateway.</li> <li>• FortiClient does not automatically register to the default gateway.</li> <li>• FortiClient ignores FortiGate broadcasts.</li> <li>• The discovered list displays only predefined FortiGate devices (if discovered).</li> </ul>	
<code>&lt;fgt_logoff_on_fct_shutdown&gt;</code>	<p>Notify FortiGate or EMS when FortiClient is shut down. Boolean value: [0   1]</p>	1
<code>&lt;show_bubble_notifications&gt;</code>	<p>Notify the user when new policies are installed. Boolean value: [0   1]</p>	1
<code>&lt;conf_rcv_time&gt;</code>	Time of the most recently received configuration.	
<code>&lt;vdom&gt;</code>	Name of the FortiGate VDOM that the client is registered to.	
<code>&lt;show_bubble_notification&gt;</code>	<p>Show notifications in the system tray when a configuration update is received from the FortiGate or EMS. Boolean value: [0   1]</p>	1
<code>&lt;silent_registration&gt;</code>	<p>Register to the FortiGate or EMS without prompting the user to accept registration. When enabled, no end user interaction is required to get the client to register to FortiGate or EMS. Boolean value: [0   1]</p> <p>This XML setting is intended to be used with <code>&lt;disable_unregister&gt;</code>.</p>	0

XML Tag	Description	Default Value
<code>&lt;notify_fgt_on_logoff&gt;</code>	Notify FortiGate or EMS when the FortiClient endpoint detects that a user logs off. When this setting is configured as 0, no message is sent to FortiGate or EMS. When this setting is configured as 1, a message is sent to FortiGate or EMS. Boolean value: [ 0   1 ]	
<code>&lt;fgt_list&gt;</code>	Encrypted list of remembered FortiGate or EMS units. Do not edit this field. This field can be safely deleted.	
<code>&lt;ui&gt;</code> elements		
<code>&lt;display_antivirus&gt;</code>	Display the Antivirus tab in the console. Boolean value: [ 0   1 ] When this setting is configured as 0, this feature will not be displayed in the FortiClient console.	
<code>&lt;display_sandbox&gt;</code>	Display the Sandbox Detection tab in the console. Boolean value: [ 0   1 ] When this setting is configured as 0, this feature will not be displayed in the FortiClient console.	
<code>&lt;display_webfilter&gt;</code>	Display the Web Filtering tab in the console. Boolean value: [ 0   1 ] When this setting is configured as 0, this feature will not be displayed in the FortiClient console.	
<code>&lt;display_vpn&gt;</code>	Display the Remote Access (VPN) tab in the console. Boolean value: [ 0   1 ] When this setting is configured as 0, this feature will not be displayed in the FortiClient console.	
<code>&lt;display_vulnerability_scan&gt;</code>	Display the Vulnerability Scan tab in the console. Boolean value: [ 0   1 ] . When this setting is configured as 0, this feature will not be displayed in the FortiClient console.	
<code>&lt;registration_dialog&gt;</code> element		
<code>&lt;show_profile_details&gt;</code>	Present to user before registration the details of the endpoint profile that will be installed once registration is completed. Boolean value: [ 0   1 ]	
<code>&lt;onnet_addresses&gt;</code>	Configure the subnet so that FortiClient in this subnet keeps the on-net prefix and subnet mask of the subnet.	

XML Tag	Description	Default Value
<code>&lt;onnet_mac_addresses&gt;</code>	Configure the mac address of the default gateway so that FortiClient in the subnet specified by <code>&lt;onnet_address&gt;</code> that is using the default gateway configured by <code>&lt;onnet_mac_address&gt;</code> keeps the on-net mac address of the default gateway.	
<code>&lt;alerts&gt;</code> element		
<code>&lt;notify_servers&gt;</code>	Enable or disable FortiClient to send alerts to FortiClient EMS. Boolean value: [0   1]. When this setting is configured as 1, FortiClient sends alerts to FortiClient EMS. The priority of alerts sent by FortiClient depends on the <code>&lt;alert_threshold&gt;</code> setting.	1
<code>&lt;alert_threshold&gt;</code>	Configures the threshold of alerts sent by FortiClient to EMS. Enter one of the following: <ul style="list-style-type: none"> <li>1: High priority alerts</li> <li>3: Medium priority alerts</li> <li>5: Low priority alerts</li> </ul>	1
<code>&lt;fortigates&gt;</code> elements		
This is a list of FortiGate that will immediately appear in the FortiClient console. The client will be capable of registering with them if they are online. If <code>&lt;endpoint_control&gt;&lt;silent_registration&gt;</code> is set to 1 then the client will attempt to silently register. The list is in priority order.		
<code>&lt;fortigate&gt;</code>	This element (with its child elements) should be repeated for each FortiGate that should appear in FortiClient's console interface.	
<code>&lt;serial_number&gt;</code>	[Optional] The serial number of the FortiGate. Displayed to the end user. It may be updated with the real serial number from the FortiGate that the client registers with.	
<code>&lt;name&gt;</code>	[Optional] The name of the FortiGate. Displayed to the end user. It may be updated with the real name from the FortiGate that the client registers with.	

XML Tag	Description	Default Value
<code>&lt;registration_password&gt;</code>	<p>When FortiClient registers/connects to FortiGate and <i>Enable Registration Key for FortiClient</i> is enabled on the FortiGate, configure the password in the <code>&lt;registration_password&gt;</code> XML setting. The <code>&lt;registration_password&gt;</code> element contains the registration password (encrypted or plain text) required to register to the FortiGate units listed in <code>&lt;endpoint_control&gt;&lt;fortigates&gt;&lt;fortigate&gt;&lt;addresses&gt;</code></p> <p>When FortiClient registers/connects to EMS and EMS requires a connection key, configure the password in the <code>&lt;registration_password&gt;</code> XML setting. The <code>&lt;registration_password&gt;</code> element contains the connection key required to register to the EMS listed in <code>&lt;endpoint_control&gt;&lt;notification_server&gt;&lt;addresses&gt;</code>.</p> <p>The element is not needed when FortiGate or EMS does not require a password.</p>	
<code>&lt;addresses&gt;</code>	<p>The FortiGate that appears in the console can be a list of FortiGate addresses. FortiClient will attempt to register to the first FortiGate listed here.</p> <p>A 'redundancy list' of FortiGate IP:port pairs that represent this FortiGate. The list must have at least one FortiGate IP:port pair. Multiple FortiGate IP:port pairs are delimited with a semicolon.</p> <p>Both IP addresses and FQDN are permitted. The list is in priority order.</p> <p>If <i>Enable Registration Key for FortiClient</i> is enabled on the FortiGate, configure the IP address or FQDN of the FortiGate in the FortiClient <code>&lt;addresses&gt;</code> XML setting.</p>	
<code>&lt;notification_server&gt;</code>	<p>Enable EMS to manage FortiClient after FortiClient registers to the FortiGate IP address and port numbers specified by EMS. Configure the IP address of EMS.</p>	
<code>&lt;nac&gt;</code> elements	<p>This element (with its child elements) specifies up to three compliance rules for network access control (NAC). When an endpoint configuration does not comply with all of the complies rules configured in the <code>&lt;nac&gt;</code> elements, non-compliance is triggered, and network access might be blocked. For information about how compliance rules work, see the <i>FortiClient Administration Guide</i>. Compliance rules apply only when FortiClient is registered to FortiGate. When FortiClient is not registered to FortiGate, compliance rules are not used. You can configure none, one, or all three compliance rules.</p>	



XML Tag	Description	Default Value
<code>&lt;processes&gt;</code>	[Optional] Create a policy for an application and its signature.	
<code>&lt;process&gt;</code>	Identify an application name and its signature. This element should be repeated for each unique application name.	
<code>&lt;process id=""&gt;</code>	ID of this process entry and name of the application that is associated with the signatures, for example, <code>&lt;process id="1" name="MS Word"&gt;</code> .	
<code>&lt;signature name="" /&gt;</code>	Identify the name of the application and its signature. Repeat this element for different versions of the same application.	
<code>&lt;files&gt;</code>	[Optional] Create a policy for a file and path. The policy is compliant when the file can be found.	
<code>&lt;path id="" /&gt;</code>	ID of this path entry. Identify the path of the file for the policy. Repeat this element for each unique file path.	
<code>&lt;registry&gt;</code>	[Optional] Create a policy for a registry key or value.	
<code>&lt;path id="" /&gt;</code>	ID of this path entry. Identify the registry key or value. When the path ends with a forward slash (/), it identifies a key. When the path ends without a forward slash, it identifies a registry value.	



When you disable `<ui>` elements from being displayed in the FortiClient console, the modules are still installed as part of the FortiClient installation. To configure a VPN only installation, you can use the FortiClient Configurator tool. When selecting VPN only, all other modules are not part of the FortiClient installation.

The `<fortigate>` element is used to define the FortiGates in a roaming (or redundant) FortiGate configuration. One or more `<fortigate>` elements may be provided within `<fortigates>`.

### Roaming FortiGate example

In the example below, *Research Lab* and *Fortinet* will appear in FortiClient's console. FortiClient will attempt to register silently to one of the IPs in *Research Lab* first. If both fail (because the laptop is not in the lab), the client will attempt to register to *Fortinet*.

Because *Fortinet* uses a FQDN, the actual FortiGate the client attempts to register to may vary because of DNS settings.

```
<forticlient_configuration>
  <endpoint_control>
    <disable_unregister>1</disable_unregister>
    <silent_registration>1</silent_registration>
    <fortigates>
      <fortigate>
```

```

        <name>Research Lab</name>
        <addresses>10.10.10.1:9090;10.10.10.2:9090</addresses>
        <registration_password>33333333</registration_password>
    </fortigate>
    <fortigate>
        <name>Fortinet</name>
        <addresses>fgt.fortinet.com:8002</addresses>
        <registration_password>22222222</registration_password>
    </fortigate>
</fortigates>
</endpoint_control>
</forticlient_configuration>

```

The following elements are set by the FortiGate. FortiClient reads them and imports into its configuration when received from the FortiGate. If modified by the user locally on the Windows system, FortiClient will ignore the changes.

```

    <vdom>
    <disable_unregister>
    <ui>

```

For the other elements that could be modified locally, If the same element is received from the FortiGate, the existing value will be overwritten.

The following elements affect Endpoint Control.

Enable antivirus real-time protection.

```

    <forticlient_configuration>
        <antivirus>
            <real_time_protection>
                <enabled>1</enabled>
            </real_time_protection>
        </antivirus>
    </forticlient_configuration>

```

Other services that may be configured from the FortiGate will usually use the full set of configuration elements available to them, as described in the various sections of this documents. These include the following:

```

    <forticlient_configuration>
        <system>
            <update>
            </update>
            <log_settings>
            </log_settings>
        </system>
        <vpn>
        </vpn>
        <firewall>
        </firewall>
        <webfilter>
        </webfilter>
        <vulnerability_scan>
        </vulnerability_scan>
    </forticlient_configuration>

```

## VPN

VPN related information is contained inside the `<VPN>` `</VPN>` XML tags. The VPN configuration includes the following subsections:

- [VPN on page 35](#)  
Global options that apply to both SSL VPN and IPsec VPN.
- [SSL VPN on page 37](#)  
SSL VPN related configurations.
- [IPsec VPN on page 41](#)  
IPsec VPN configurations.

IPsec VPN and SSL VPN each have two subsections:

- Options  
Options related to the specific type of VPN.
- Connections  
User defined connections.

## VPN options

The VPN `<options>` XML tag contains global information controlling VPN states:

```
<forticlient_configuration>
  <vpn>
    <options>
      <current_connection_name>ssldemo</current_connection_name>
      <current_connection_type>ssl</current_connection_type>
      <autoconnect_tunnel></autoconnect_tunnel>
      <autoconnect_only_when_offnet>0</autoconnect_only_when_offnet>
      <keep_running_max_tries>0</keep_running_max_tries>
      <save_password>0</save_password>
      <minimize_window_on_connect>1</minimize_window_on_connect>
      <allow_personal_vpns>1</allow_personal_vpns>
      <disable_connect_disconnect>0</disable_connect_disconnect>
      <show_vpn_before_logon>0</show_vpn_before_logon>
      <use_windows_credentials>1</use_windows_credentials>
      <use_legacy_vpn_before_logon>0</use_legacy_vpn_before_logon>
      <show_negotiation_wnd>0</show_negotiation_wnd>
      <disable_dead_gateway_detection>0</disable_dead_gateway_detection>
      <vendor_id></vendor_id>
    </options>
  </vpn>
</forticlient_configuration>
```

The following table provides VPN options XML tags, the description, and the default value (where applicable).

XML Tag	Description	Default Value
<code>&lt;current_connection_name&gt;</code>	Name of the current connection, if any.	
<code>&lt;current_connection_type&gt;</code>	Enter of the current connection. Select either: [ipsec   ssl]	
<code>&lt;autoconnect_tunnel&gt;</code>	Name of the configured IPsec VPN or SSL VPN tunnel to automatically connect to when FortiClient starts. Requires that the <code>&lt;save_password&gt;</code> tag be set to 1. Boolean value: [0   1]	
<code>&lt;autoconnect_only_when_offnet&gt;</code>	Autoconnect only when FortiClient is off-net. Boolean value: [0   1]	0
<code>&lt;keep_running_max_tries&gt;</code>	The maximum number of attempts to make when retrying a VPN connection that was lost due to network issues. If this tag is set to 0, it will retry indefinitely.	0
<code>&lt;save_password&gt;</code>	Save user provided connection passwords. Boolean value: [0   1]	0
<code>&lt;minimize_window_on_connect&gt;</code>	Minimize the FortiClient dashboard after successfully establishing a connection. Boolean value: [0   1]	1
<code>&lt;allow_personal_vpns&gt;</code>	Enable end users to create, modify, and use personal VPN configurations. Boolean value: [0   1] When this setting is configured as 0, FortiClient users will not be able to configure personal VPN connections. Only provisioned VPN connections are available to the user.	1
<code>&lt;use_legacy_vpn_before_logon&gt;</code>	Use the old VPN before logon interface. Boolean value: [0   1]	1
<code>&lt;disable_connect_disconnect&gt;</code>	Boolean value: [0   1]	0
<code>&lt;show_vpn_before_logon&gt;</code>	Allow user to select VPN connection from a list before login onto the system. Boolean value: [0   1]	0
<code>&lt;use_windows_credentials&gt;</code>	Connect with the current user name and password. Boolean value: [0   1]	1

XML Tag	Description	Default Value
<code>&lt;show_negotiation_wnd&gt;</code>	Display information on FortiClient dashboard while establishing connections. Boolean value: [0   1]	0
<code>&lt;disable_dead_gateway_detection&gt;</code>	Notifies Microsoft Windows OS to disable the detection of dead gateway. You may set this element to 1 if you observe that FortiClient IPsec VPN sends packets using an IP address other than those in the IP address pool assigned by the IPsec VPN server. Boolean value: [0   1]	
<code>&lt;vendor_id&gt;</code>	The default value is empty, signifying that FortiClient should use its hard coded ID during IPsec.	

## SSL VPN

SSL VPN configurations consist of one `<options>` section, followed by one or more VPN `<connection>` section.

```

<forticlient_configuration>
  <vpn>
    <sslvpn>
      <options>
        <enabled>1</enabled>
        <dnscache_service_control>0</dnscache_service_control>
        <!-- 0=disable dnscache, 1=do not touch dnscache service, 2=restart dnscache
             service, 3=sc control dnscache paramchange -->
        <prefer_sslvpn_dns>1</prefer_sslvpn_dns>
        <use_legacy_ssl_adapter>1</use_legacy_ssl_adapter>
        <prefer_dtls_tunnel>1</prefer_dtls_tunnel>
        <keep_connection_alive>1</keep_connection_alive>
      </options>
      <connections>
        <connection>
          <name>SSLVPN_Name</name>
          <description>Optional_Description</description>
          <server>ssldemo.fortinet.com:10443</server>
          <username>Encrypted/NonEncrypted_UsernameString</username>
          <single_user_mode>0</single_user_mode>
          <ui>
            <show_remember_password>1</show_remember_password>
            <show_alwaysup>1</show_alwaysup>
            <show_autoconnect>1</show_autoconnect>
          </ui>
          <password>Encrypted/NonEncrypted_PasswordString</password>
          <certificate />
          <warn_invalid_server_certificate>1</warn_invalid_server_certificate>
          <prompt_certificate>0</prompt_certificate>
          <prompt_username>0</prompt_username>
          <fgt>1</fgt>
          <on_connect>
            <script>

```

```

        <os>windows</os>
        <script>
            <![CDATA[test]]>
        </script>
    </script>
</on_connect>
<on_disconnect>
    <script>
        <os>windows</os>
        <script>
            <![CDATA[]]>
        </script>
    </script>
</on_disconnect>
</connection>
</connections>
</sslvpn>
</vpn>
</forticlient_configuration>

```

The following table provides SSL VPN XML tags, the description, and the default value (where applicable).

XML Tag	Description	Default Value
<sslvpn><options> elements		
<enabled>	Enable or disable SSL VPN. Boolean value: [ 0   1 ]	1
<dnscache_ service_ control>	FortiClient disables Windows OS DNS cache when an SSL VPN tunnel is established. The DNS cache is restored after SSL VPN tunnel is disconnected. If it is observed that FSSO clients do not function correctly when an SSL VPN tunnel is up, use the following XML configuration to control DNS cache	0
<prefer_sslvpn_ dns>	When this setting is 0, custom DNS server from SSL VPN will not be added to physical interface. When this setting is 1, custom DNS server from SSL VPN will be prepended to physical interface. Boolean value: [ 0   1 ]	0
<use_legacy_ ssl_ adapter>	When this setting is 0, the new SSL driver is used. When this setting is 1, the legacy SSL driver is used. Boolean value: [ 0   1 ]	1

XML Tag	Description	Default Value
<code>&lt;prefer_dtls_tunnel&gt;</code>	<p>When this setting is 0, FortiClient uses TLS, even if <code>dtls-tunnel</code> is enabled on FortiGate.</p> <p>When this setting is 1, FortiClient uses DTLS, if it is enabled on the FortiGate, and tunnel establishment is successful. If <code>dtls-tunnel</code> is disabled on FortiGate, or tunnel establishment is not successful, TLS is used.</p> <p>Boolean value: [ 0   1 ]</p>	
<code>&lt;keep_connection_alive&gt;</code>	<p>Retry restoring connection of an active VPN session.</p> <p>Boolean value: [ 0   1 ]</p>	

The `<connections>` XML tag may contain one or more `<connection>` elements. Each `<connection>` has the following:

- information used to establish an SSL VPN connection
- `on_connect`: a script to run right after a successful connection
- `on_disconnect`: a script to run just after a disconnection

Connection details is described in table below.

The following table provides VPN connection XML tags, the description, and the default value (where applicable).

XML Tag	Description	Default Value
<code>&lt;name&gt;</code>	VPN connection name.	
<code>&lt;description&gt;</code>	Optional description to identify the VPN connection.	
<code>&lt;server&gt;</code>	IP address or FQDN of SSL server, along with the port number as applicable.	Default port number: 443
<code>&lt;username&gt;</code>	Either encrypted or non-encrypted user name on SSL server.	
<code>&lt;single_user_mode&gt;</code>	<p>Enable or disable single user mode. If enabled, new and existing VPN connections cannot be established or will be disconnected if more than one user is logged on the computer</p> <p>Boolean value: [ 0   1 ]</p>	0
<code>&lt;password&gt;</code>	Either encrypted or non-encrypted password of the given user	
<code>&lt;certificate&gt;</code>	Encrypted certificate name to connect with.	

XML Tag	Description	Default Value
<code>&lt;warn_invalid_server_certificate&gt;</code>	Enable or disable displaying of a warning message if the server certificate is invalid. Boolean value: [0   1]	0
<code>&lt;prompt_certificate&gt;</code>	Request for a certificate during a connection establishment. Boolean value: [0   1]	0
<code>&lt;prompt_username&gt;</code>	Request for a user name. Boolean value: [0   1]	1
<code>&lt;fgt&gt;</code>	Indicates whether FortiClient received a VPN configuration from FortiGate or EMS. When this setting is 1, FortiClient received a VPN configuration from FortiGate or EMS, and the user can view the VPN configuration when registered to FortiGate or EMS. If FortiClient is unregistered from FortiGate or EMS after registering and receiving the VPN configuration, the user can view and delete the VPN configuration, but not edit it. When this setting is 0, FortiClient did not receive a VPN configuration from FortiGate or EMS, and the user can view or delete VPN configurations. It is not recommended to manually change the <code>&lt;fgt&gt;</code> setting. Boolean value: [0   1]	
<p><code>&lt;ui&gt;</code> elements</p> <p>The elements of the <code>&lt;ui&gt;</code> XML tag are set by the FortiGate following an SSL VPN connection.</p>		
<code>&lt;show_remember_password&gt;</code>	Display or hide the remember passwords checkbox in the console. Boolean value: [0   1]	
<code>&lt;show_alwaysup&gt;</code>	Display or hide the always up checkbox in the console. Boolean value: [0   1]	
<code>&lt;show_autoconnect&gt;</code>	Display or hide the autoconnect checkbox in the console. Boolean value: [0   1]	



VPN connection name is mandatory. If a connection of this type and this name exists, its values will be overwritten with the new ones.

The `<on_connect>` and `<on_disconnect>` tags both have very similar tag structure:

```
<on_connect>
  <script>
    <os>windows</os>
  </script>
</script>
```



```

        <![CDATA[
        ]]>
    </script>
</script>
</script>
</on_connect>
<on_disconnect>
    <script>
        <os>windows</os>
        <script>
            <script>
                <![CDATA[
                ]]>
            </script>
        </script>
    </script>
</on_disconnect>

```

The following table provides CDATA XML tags, the description, and the default value (where applicable).

XML Tag	Description	Default Value
<os>	The operating system for which the script is written. Select either: [windows   MacOSX]	
<script>	The MS DOS batch or Mac OS X shell script to run.	
<![CDATA[ ]]>	Wraps the scripts in CDATA elements.	

Write MS DOS batch or Mac OS X Shell script inside the CDATA tag. One line per command, just like a regular batch script file. The script will be executed in the context of the user that connected the tunnel. Wherever you write #username# in your script, it will be automatically substituted with the XAuth username of the user that connected the tunnel. Wherever you write #password# in your script, it will be automatically substituted with the XAuth password of the user that connected the tunnel. Remember to check your XML file before deploying to ensure that carriage returns/line feeds are present.

The example scripts above show a script that mounts several network drives after an SSL connection is established. The drives are unmounted with the corresponding scripts in the <on\_disconnect> XML tag.

The <on\_connect> and <on\_disconnect> scripts are optional.

## IPsec VPN

IPsec VPN configurations have one <options> section and one or more <connection> section.

```

<forticlient_configuration>
<vpn>
  <ipsecvpn>
    <options>
      <show_vpn_before_logon>0</show_vpn_before_logon>
      <show_auth_cert_only>1</show_auth_cert_only>
      <disconnect_on_log_off>1</disconnect_on_log_off>
      <keep_connection_alive>0</keep_connection_alive>
      <enabled>1</enabled>
    </options>
  </ipsecvpn>
</vpn>
</forticlient_configuration>

```

```

<beep_if_error>0</beep_if_error>
<beep_continuously>0</beep_continuously>
<beep_seconds>0</beep_seconds>
<usewincert>1</usewincert>
<use_win_current_user_cert>1</use_win_current_user_cert>
<use_win_local_computer_cert>1</use_win_local_computer_cert>
<block_ipv6>1</block_ipv6>
<uselocalcert>0</uselocalcert>
<usesmcardcert>1</usesmcardcert>
<enable_udp_checksum>0</enable_udp_checksum>
<mtu_size>1300</mtu_size>
<use_windows_credentials>0</use_windows_credentials>
<disable_default_route>0</disable_default_route>
<show_auth_cert_only>1</show_auth_cert_only>
<check_for_cert_private_key>1</check_for_cert_private_key>
<enhanced_key_usage_mandatory>1</enhanced_key_usage_mandatory>
</options>
<connections>
  <connection>
    <name>ipsecdemo</name>
    <single_user_mode>0</single_user_mode>
    <type>manual</type>
    <ui>
      <show_passcode>0</show_passcode>
      <show_remember_password>1</show_remember_password>
      <show_alwaysup>1</show_alwaysup>
      <show_autoconnect>1</show_autoconnect>
    </ui>
    <tray_menu>1</tray_menu>
    <ike_settings>
      <prompt_certificate>0</prompt_certificate>
      <implied_SPDO>0</implied_SPDO>
      <implied_SPDO_timeout>0</implied_SPDO_timeout>
      <server>ipsecdemo.fortinet.com</server>
      <authentication_method>Preshared Key</authentication_method>
      <auth_key>Encdab907ed117eafaadd92f82b3e768b5414e4402dbd4df4585d4202c65940f1b2e9</auth_key>
      <mode>aggressive</mode>
      <dhgroup>5</dhgroup>
      <key_life>28800</key_life>
      <localid></localid>
      <nat_traversal>1</nat_traversal>
      <mode_config>1</mode_config>
      <enable_local_lan>0</enable_local_lan>
      <nat_alive_freq>5</nat_alive_freq>
      <dpd>1</dpd>
      <dpd_retry_count>3</dpd_retry_count>
      <dpd_retry_interval>5</dpd_retry_interval>
      <fgt>1</fgt>
      <enable_ike_fragmentation>0</enable_ike_fragmentation>
    </ike_settings>
    <xauth>
      <enabled>1</enabled>
      <prompt_username>1</prompt_username>
      <username>Encrypted/NonEncrypted_UsernameString</username>
      <password />
      <attempts_allowed>1</attempts_allowed>
      <use_otp>0</use_otp>
    </xauth>
  </connection>
</connections>

```

```

    </xauth>
    <proposals>
      <proposal>3DES|MD5</proposal>
      <proposal>3DES|SHA1</proposal>
      <proposal>AES128|MD5</proposal>
      <proposal>AES128|SHA1</proposal>
      <proposal>AES256|SHA256</proposal>
    </proposals>
  </ike_settings>
<ipsec_settings>
  <remote_networks>
    <network>
      <addr>0.0.0.0</addr>
      <mask>0.0.0.0</mask>
    </network>
  </remote_networks>
  <dhgroup>5</dhgroup>
  <key_life_type>seconds</key_life_type>
  <key_life_seconds>1800</key_life_seconds>
  <key_life_Kbytes>5120</key_life_Kbytes>
  <replay_detection>1</replay_detection>
  <pfs>1</pfs>
  <use_vip>1</use_vip>
  <virtualip>
    <dnsserver_secondary></dnsserver_secondary>
    <!-- server IP address -->
    <type>modeconfig</type>
    <ip>0.0.0.0</ip>
    <mask>0.0.0.0</mask>
    <dnsserver>0.0.0.0</dnsserver>
    <winserver>0.0.0.0</winserver>
  </virtualip>
  <proposals>
    <proposal>3DES|MD5</proposal>
    <proposal>3DES|SHA1</proposal>
    <proposal>AES128|MD5</proposal>
    <proposal>AES128|SHA1</proposal>
    <proposal>AES256|SHA256</proposal>
  </proposals>
</ipsec_settings>
<on_connect>
  <script>
    <os>windows</os>
    <script>
    <script>
      <![CDATA[]]>
    </script>
  </script>
</on_connect>
<on_disconnect>
  <script>
    <os>windows</os>
    <script>
    <script>
      <![CDATA[]]>
    </script>
  </script>

```

```

        </script>
    </script>
    </on_disconnect>
</connection>
</connections>
</ipsecvpn>
</vpn>
</forticlient_configuration>

```

The following table provides IPsec VPN options XML tags, the description, and the default value (where applicable).

XML Tag	Description	Default Value
<ipsecvpn> <options> elements		
<show_vpn_before_logon>	Display a list of configured VPN tunnels in a list on the Windows logon screen. Boolean value: [ 0   1 ]	0
<show_auth_cert_only>	Supress dialog boxes from being displayed in the FortiClient console when SmartCard certificates are used. Boolean value: [ 0   1 ]	0
<disconnect_on_log_off>	Drop the established VPN connection when the user logs off. Boolean value: [ 0   1 ]	1
<keep_connection_alive>	Retry restoring the connection of an active VPN session. Boolean value: [ 0   1 ]	0
<enabled>	Enable or disable IPsec VPN. Boolean value: [ 0   1 ]	1
<beep_if_error>	Beep if VPN connection attempt fails. Boolean value: [ 0   1 ]	0
<beep_continuously>	Enable or disable the continuous beep. Boolean value: [ 0   1 ]	1
<beep_seconds>	Enter a value for the number of seconds to beep if an error occurs.	60
<usewincert>	Use Microsoft Windows certificates for connections. Boolean value: [ 0   1 ]	
<use_win_current_user_cert>	Use Microsoft Windows current user certificates for connections. Boolean value: [ 0   1 ]	1

XML Tag	Description	Default Value
<code>&lt;use_win_local_computer_cert&gt;</code>	Use Microsoft Windows local computer certificates for connections. Boolean value: [0   1]	1
<code>&lt;block_ipv6&gt;</code>	Drop IPv6 traffic when an IPsec VPN connection is established. Boolean value: [0   1]	0
<code>&lt;uselocalcert&gt;</code>	Use local certificates for connections. Boolean value: [0   1]	
<code>&lt;usesmcardcert&gt;</code>	Use certificates on smart cards. Boolean value: [0   1]	
<code>&lt;enable_udp_checksums&gt;</code>	Enable or disable UDP checksums. This setting stops FortiClient from calculating and inserting checksums into the UDP packets that it creates. Boolean value: [0   1]	0
<code>&lt;mtu_size&gt;</code>	Maximum Transmit Unit (MTU) size for packets on the VPN tunnel.	
<code>&lt;use_windows_credentials&gt;</code>	Use Microsoft Windows login credentials for VPN before logon authentication. Boolean value: [0   1]	
<code>&lt;disable_default_route&gt;</code>	Disable the default route to the gateway when the tunnel is up and restore after the tunnel is down. Boolean value: [0   1]	0
<code>&lt;check_for_cert_private_key&gt;</code>	Enable or disable checks for the Windows certificate private key. When set to 1, FortiClient checks for the Windows certificate private key. Boolean value: [0   1]	0
<code>&lt;enhanced_key_usage_mandatory&gt;</code>	Enable or disable certificates with enhanced key usage. Used with <code>&lt;check_for_cert_private_key&gt;</code> . When <code>&lt;check_for_cert_private_key&gt;</code> is set to 1 and <code>&lt;enhanced_key_usage_mandatory&gt;</code> is set to 1, only the certificates with enhanced key usage are listed. Boolean value: [0   1]	

The `<connections>` XML tag may contain one or more `<connection>` element. Each `<connection>` has the following:

- name and type: the name and type of connection
- IKE settings: information used to establish an IPsec VPN connection
- IPsec settings:

- `on_connect`: a script to run right after a successful connection
- `on_disconnect`: a script to run just after a disconnection

The following table provides VPN connection XML tags, the description, and the default value (where applicable).

XML Tag	Description	Default Value
<code>&lt;name&gt;</code>	VPN connection name.	
<code>&lt;single_user_mode&gt;</code>	Enable or disable single user mode. If enabled, new and existing VPN connections cannot be established or will be disconnected if more than one user is logged in. Boolean value: [0   1]	0
<code>&lt;type&gt;</code>	IPSec VPN connection type. Select either: [manual   auto]	
<code>&lt;tray_menu&gt;</code>	Enable or disable the tray menu. Boolean value: [0   1]	1
<b>&lt;ui&gt; elements</b>  The elements of the <code>&lt;ui&gt;</code> / <code>&lt;/ui&gt;</code> XML tags are set by the FortiGate following an IPSec VPN connection.		
<code>&lt;show_passcode&gt;</code>	Display <i>Passcode</i> instead of <i>Password</i> in the VPN tab in the console. Boolean value: [0   1]	
<code>&lt;show_remember_password&gt;</code>	Display the remember password checkbox in the console. Boolean value: [0   1]	
<code>&lt;show_alwaysup&gt;</code>	Display the always up checkbox in the console. Boolean value: [0   1]	
<code>&lt;show_autoconnect&gt;</code>	Display the autoconnect checkbox in the console. Boolean value: [0   1]	



The VPN connection name is mandatory. If a connection of this type and this name exists, its values will be overwritten with the new ones.

## IKE settings

Internet Key Exchange (IKE) is performed automatically based on pre-shared keys or X.509 digital certificates.

The following table provides IKE setting XML tags, the description, and the default value (where applicable).

XML Tag	Description	Default Value
<code>&lt;prompt_certificate&gt;</code>	Prompt for certificate on connect. Boolean value: [0   1]	
<code>&lt;implied_SPDO&gt;</code>	Configure what ports allow traffic. When this setting is 0, only traffic from port 500 and 4500 are allowed. When this setting is 1, other traffic is allowed. Boolean value: [0   1]	
<code>&lt;implied_SPDO_timeout&gt;</code>	<p>When <code>&lt;implied_SPDO&gt;</code> is set to 1, <code>&lt;implied_SPDO_timeout&gt;</code> is the timeout in seconds.</p> <p>FortiClient blocks all outbound non-IKE packets when <code>&lt;implied_SPDO&gt;</code> is set to 1. This is a security feature in the IPsec protocol. If the network traffic goes through a captive portal, the intended IPsec VPN server may be unreachable, until the user provides some credentials on a web page. Thus, setting <code>&lt;implied_SPDO&gt;</code> to 1 may have the side effect of blocking access to the captive portal, which in turn blocks access to the IPsec VPN server.</p> <p>To avoid this deadlock, set <code>&lt;implied_SPDO_timeout&gt;</code> to a value greater than 0. FortiClient will allow all outbound traffic (including non-IKE traffic) for the duration configured. Some users find that a value of 30 or 60 seconds suffices. If <code>&lt;implied_SPDO_timeout&gt;</code> is set to 0, the <code>&lt;implied_SPDO&gt;</code> element behaves as if set to 0.</p> <p>When <code>&lt;implied_SPDO&gt;</code> is set to 0, <code>&lt;implied_SPDO_timeout&gt;</code> is ignored.</p>	
<code>&lt;server&gt;</code>	IP address or FQDN.	
<code>&lt;authentication_method&gt;</code>	<p>Authentication method. Select one of the following:</p> <ul style="list-style-type: none"> <li>• Preshared Key</li> <li>• X509 Certificate</li> <li>• Smartcard X509 Certificate</li> <li>• System Store X509 Certificate</li> </ul>	
<code>&lt;auth_key&gt;</code>	An encrypted value depending on the authentication method: a preshared key or a certificate name.	

XML Tag	Description	Default Value
<mode>	Connection mode. Select either: [aggressive   main]	
<dhgroup>	A list of possible Diffie-Hellman (DH) protocol groups, separated by semi-colon.	
<key_life>	Phase 2 key expiry duration, in seconds.	28800
<localid>	Enter the peer ID configured in the FortiGate Phase 1 configuration. If <i>Accept any peer ID</i> has been configured, leave this field blank.	
<nat_traversal>	Enable or disable NAT traversal. Boolean value: [0   1]	
<mode_config>	Enable or disable mode configuration. Boolean value: [0   1]	
<enable_local_lan>	Enable or disable local LAN. When the boolean value is set to 0, local LAN access is disabled when using a full tunnel. When the boolean value is set to 1, local LAN access is enabled when using a full tunnel. Does not apply to split tunnels. Boolean value: [0   1]	0
<nat_alive_freq>	NAT alive frequency.	
<dpd>	Enable or disable Dead Peer Detection (DPD). Boolean value: [0   1]	1
<dpd_retry_count>	Number of times to send unacknowledged DPD messages before declaring peer as dead.	3
<dpd_retry_interval>	Duration of DPD idle periods, in seconds.	5
<enable_ike_fragmentation>	Support fragmented IKE packets.	0
<xauth> elements		
<enabled>	Select to use IKE Extended Authentication (xAuth). Boolean value: [0   1]	
<prompt_username>	Request for a user name. Boolean value: [0   1]	



XML Tag	Description	Default Value
<code>&lt;username&gt;</code>	Either encrypted or non-encrypted user name on IPsec server.	
<code>&lt;password&gt;</code>	Either encrypted or non-encrypted password.	
<code>&lt;attempts_allowed&gt;</code>	Maximum number of failed login attempts allowed.	
<code>&lt;use_otp&gt;</code>	Use One Time Password (OTP). When this setting is 0, FortiClient will not respond to DPD during XAuth. When this setting is 1, FortiClient will respond to DPD during XAuth, which may be necessary when two-factor authentication and DPD are both involved. Boolean value: [0   1]	0
<code>&lt;proposals&gt;</code> elements		
<code>&lt;proposal&gt;</code>	Encryption and authentication types to use, separated by a pipe. Example: <code>&lt;proposal&gt;3DES MD5&lt;/proposal&gt;</code> Multiple elements accepted. First setting: Encryption type: DES, 3DES, AES128, AES192, AES256 Second setting: Authentication type: MD5, SHA1, SHA256, SHA384, SHA512	

## IPsec settings

The following table provides IPsec settings XML tags, the description, and the default value (where applicable).

XML Tag	Description	Default Value
<code>&lt;remote_networks&gt;</code> elements		
<code>&lt;network&gt;</code>	Specifies a network address <code>&lt;addr&gt;</code> with subnet mask <code>&lt;mask&gt;</code> .	
<code>&lt;addr&gt;</code>	Network IP address.	
<code>&lt;mask&gt;</code>	Subnet mask to apply to network address <code>&lt;addr&gt;</code> .	
<code>&lt;dhgroup&gt;</code>	A list of possible Diffie-Hellman (DH) protocol groups, separated by semi-colon.	

XML Tag	Description	Default Value
<code>&lt;key_life_type&gt;</code>	Phase 2 key re-key duration type. Select one of the following: <ul style="list-style-type: none"> <li>seconds</li> <li>kbytes</li> <li>both</li> </ul>	
<code>&lt;key_life_seconds&gt;</code>	Phase 2 key maximum life in seconds.	1800
<code>&lt;key_life_Kbytes&gt;</code>	Phase 2 key maximum life in kB.	5120
<code>&lt;replay_detection&gt;</code>	Detect an attempt to replay a previous VPN session.	
<code>&lt;pfs&gt;</code>	Enable or disable Perfect Forward Secrecy (PFS). Boolean value: [0   1]	
<code>&lt;use_vip&gt;</code>	Use virtual IP. Boolean value: [0   1]	
<code>&lt;virtualip&gt;</code> elements		
<code>&lt;type&gt;</code>	Enter of virtual IP. Select either: [modeconfig   dhcpoveripsec]	
<code>&lt;ip&gt;</code>	IP address.	
<code>&lt;mask&gt;</code>	Network mask.	
<code>&lt;dnsserver&gt;</code>	DNS server IP address.	
<code>&lt;dnsserver_secondary&gt;</code>	The secondary DNS server IP address.	
<code>&lt;winserver&gt;</code>	Microsoft Windows server IP address.	
<code>&lt;proposals&gt;</code> elements		
<code>&lt;proposal&gt;</code>	Encryption and authentication types to use, separated by a pipe. Example: <code>&lt;proposal&gt;3DES MD5&lt;/proposal&gt;</code> Multiple elements accepted. First setting: Encryption type: DES, 3DES, AES128, AES192, AES256 Second setting: Authentication type: MD5, SHA1, SHA256, SHA384, SHA512	

The `on_connect` and `on_disconnect` structure and scripting format are similar to that described in the section titled: SSL VPN earlier.

## Antivirus

The Antivirus configuration data are contained in the `<antivirus>` `</antivirus>` XML tags.

The following are subsections of the antivirus configuration.

- [General options on page 51](#)  
Options that apply to the overall operation of the antivirus service.
- [Real-time protection on page 52](#)  
Options to use during when real-time protection scanning is activated.
- [On-Demand scans on page 57](#)  
Details relating to on-demand scans.
- [Scheduled scans on page 61](#)  
Scheduled scanning of the system.
- [Email on page 64](#)  
How to handle scanning of email messages.
- [Quarantine on page 65](#)  
Configures quarantine operations.
- [Server on page 66](#)  
Special options for servers.

## General options

This has options that enable or disable various services in the antivirus feature.

```
<forticlient_configuration>
  <antivirus>
    <enabled>1</enabled>
    <signature_expired_notification>0</signature_expired_notification>
    <scan_on_insertion>0</scan_on_insertion>
    <shell_integration>1</shell_integration>
    <antirookit>4294967295</antirookit>
    <fortiguard_analytics>0</fortiguard_analytics>
    <multi_process_limit>1</multi_process_limit>
  </antivirus>
</forticlient_configuration>
```

The following table provides antivirus general option XML tags, the description, and the default value (where applicable).

XML Tag	Description	Default Value
<code>&lt;enabled&gt;</code>	Enable or disable antivirus. Boolean value: [0   1]	1
<code>&lt;signature_expired_notification&gt;</code>	Enable or disable expired signature notification. Boolean value: [0   1]	0
<code>&lt;scan_on_insertion&gt;</code>	Enable or disable scan on insertion. Boolean value: [0   1]	0
<code>&lt;shell_integration&gt;</code>	Enable or disable shell integration. Boolean value: [0   1]	1
<code>&lt;antirootkit&gt;</code>	Enable or disable antirootkit. This field is a bit mask. When set to 0, all antirootkit features are disabled. 4294947295 (=0xffffffff) means all antirootkit features are enabled.	
<code>&lt;fortiguard_analytics&gt;</code>	Enable or disable FortiGuard Analytics. Boolean value: [0   1]	1
<code>&lt;multi_process_limit&gt;</code>	The number of antivirus scanning processes to use for scheduled or on-demand scans. The maximum is the number of CPU processors and cores. When set to 0, FortiClient will determine the optimal value.	0

## Real-time protection

The `<real_time_protection>` element configures how the scanner processes files used by programs running on the system.

Several tags are similar between this section and the previous one: `<on_demand_scanning>`.

```
<forticlient_configuration>
  <antivirus>
    <real_time_protection>
      <enabled>1</enabled>
      <use_extreme_db>0</use_extreme_db>
      <when>0</when>
      <ignore_system_when>0</ignore_system_when>
      <on_virus_found>0</on_virus_found>
      <popup_alerts>0</popup_alerts>
      <popup_registry_alerts>0</popup_registry_alerts>
      <cloud_based_detection>
        <on_virus_found></on_virus_found>
      </cloud_based_detection>
      <compressed_files>
        <scan>1</scan>
        <maxsize>2</maxsize>
      </compressed_files>
      <riskware>
```

```

        <enabled>1</enabled>
    </riskware>
    <adware>
        <enabled>1</enabled>
    </adware>
    <heuristic_scanning>
        <level>3</level>
        <action>0</action>
    </heuristic_scanning>
    <scan_file_types>
        <all_files>1</all_files>
        <file_types>
            <extensions>.386,.ACE,.ACM,.ACV,.ACX,.ADT,.APP,.ASD,.ASP,.ASX,.AVB,.AX,.A
X2,.BAT,.BIN,.BTM,.CDR,.CFM,.CHM,.CLA,.CLASS,.CMD,.CNN,.COM,.CPL,.CPT
,.CPY,.CSC,.CSH,.CSS,.DEV,.DLL,.DOC,.DOT,.DRV,.DVB,.DWG,.EML,.EXE,.FO
N,.GMS,.GVB,.HLP,.HTA,.HTM,.HTML,.HTT,.HTW,.HTX,.HXS,.INF,.INI,.JPG,.
JS,.JTD,.KSE,.LGP,.LIB,.LNK,.MDB,.MHT,.MHTM,.MHTML,.MOD,.MPD,.MPP,.MP
T,.MRC,.OCX,.PIF,.PL,.PLG,.PM,.PNF,.PNP,.POT,.PPA,.PPS,.PPT,.PRC,.PWZ
,.QLB,.QPW,.REG,.RTF,.SBF,.SCR,.SCT,.SH,.SHB,.SHS,.SHT,.SHTML,.SHW,.S
IS,.SMM,.SWF,.SYS,.TD0,.TLB,.TSK,.TSP,.TT6,.VBA,.VBE,.VBS,.VBX,.VOM,.
VSD,.VSS,.VST,.VWP,.VXD,.VXE,.WBK,.WBT,.WIZ,.WK,.WML,.WPC,.WPD,.WSC,.
WSF,.WSH,.XLS,.XML,.XTP</extensions>
            <include_files_with_no_extension>0</include_files_with_no_extension>
        </file_types>
    </scan_file_types>
    <exclusions>
        <file />
        <folder />
        <file_types>
            <extensions />
        </file_types>
    </exclusions>
    <sandboxing>
        <enabled>1</enabled>
        <sandbox_address>172.17.61.138</sandbox_address>
        <timeout>240</timeout>
        <use_sandbox_signatures>1</use_sandbox_signatures>
        <check_for_signatures_every>5</check_for_signatures_every>
        <action_on_error>0</action_on_error>
        <scan_usb>1</scan_usb>
        <scan_mapped_drives>1</scan_mapped_drives>
    </sandboxing>
</real_time_protection>
</antivirus>
</forticlient_configuration>

```

The following table provides real time protection XML tags, the description, and the default value (where applicable).

XML Tag	Description	Default Value
<enabled>	Enable or disable real time protection. Boolean value: [0   1]	1
<use_extreme_db>	Use extreme database. Boolean value: [0   1]	

XML Tag	Description	Default Value
<code>&lt;when&gt;</code>	File I/O activities that result in a scan. Select one of the following: <ul style="list-style-type: none"> <li>0: scan files when processes read or write them + enable scan network files</li> <li>1: scan files when processes read them + disable scan network files</li> <li>2: scan files when processes write them + disable scan network files</li> <li>3: scan files when processes read or write them + disable scan network files</li> <li>4: scan files when processes read them + enable scan network files</li> <li>5: scan files when processes write them + enable scan network files</li> </ul>	0
<code>&lt;ignore_system_when&gt;</code>	Select one of the following: <ul style="list-style-type: none"> <li>0: scan files when system processes read or write them</li> <li>1: scan files when system processes read them</li> <li>2: scan files when system processes write them (default)</li> <li>3: do not scan files when system processes read or write them</li> </ul>	2
<code>&lt;on_virus_found&gt;</code>	The action FortiClient will perform if a virus is found. Select one of the following: <ul style="list-style-type: none"> <li>0: clean</li> <li>1: ignore</li> <li>2: repair</li> <li>3: warning</li> <li>4: quarantine</li> <li>5: deny access</li> </ul>	5
<code>&lt;popup_alerts&gt;</code>	Display alerts when a virus is found. Boolean value: [0   1]	1
<code>&lt;popup_registry_alerts&gt;</code>	Enable or disable pop-up registry alerts. This feature displays alerts if a process tries to change registry start items. Boolean value: [0   1]	0
<code>&lt;cloud_based_detection&gt;</code> elements		

XML Tag	Description	Default Value
<code>&lt;on_virus_found&gt;</code>	The action FortiClient will perform when a virus is detected by the Cloud Based Behavior Scan (CBBS). Select one of the following: <ul style="list-style-type: none"> <li>4: Quarantine</li> <li>5: Deny access</li> </ul>	
<code>&lt;compressed_files&gt;</code> elements		
<code>&lt;scan&gt;</code>	Enable or disable scanning of compressed files. Boolean value: [0   1]	1
<code>&lt;maxsize&gt;</code>	Maximum compressed file size to scan in MB. A number up to 65535. 0 means no limit.	2
<code>&lt;riskware&gt;</code> element		
<code>&lt;enabled&gt;</code>	Enable or disable scanning of riskware files. Boolean value: [0   1]	1
<code>&lt;adware&gt;</code> element		
<code>&lt;enabled&gt;</code>	Enable or disable scanning of adware files. Boolean value: [0   1]	1
<code>&lt;heuristic_scanning&gt;</code> elements		
<code>&lt;level&gt;</code>	Level is from 0 to 4. Applied to both real-time and on-demand scans.	
<code>&lt;action&gt;</code>	The action FortiClient will perform if a virus is found. Select either: <ul style="list-style-type: none"> <li>0: warning</li> <li>1: deny access</li> <li>3: submit only</li> </ul>	
<code>&lt;scan_file_types&gt;</code> element		
<code>&lt;all_files&gt;</code>	Enabled or disable scanning of all file types. If enabled, ignore the <code>&lt;file_types&gt;</code> element. Boolean value: [0   1]	1
<code>&lt;scan_file_types&gt;&lt;file_types&gt;</code> elements		
<code>&lt;extensions&gt;</code>	Comma separated list of extensions to scan.	

XML Tag	Description	Default Value
<code>&lt;include_files_with_no_extension&gt;</code>	Determines whether to scan files with no extension. Boolean value: [0   1]	0
<p><code>&lt;exclusions&gt;</code> elements -- FortiClient supports using wildcards and path variables to specify files and folders to exclude from scanning. The following wildcards and variables are supported, among others:</p> <ul style="list-style-type: none"> <li>Using wildcards to exclude a range of file names with a specified extension, such as Edb*.jrs</li> <li>Using wildcards to exclude all files with a specified extension, such as *.jrs</li> <li>Path variable %windir%</li> <li>Path variable %allusersprofile%</li> <li>Path variable %systemroot%</li> <li>Path variable %systemdrive%</li> </ul> <p>Combinations of wildcards and variables are not supported.</p>		
<code>&lt;file&gt;</code>	Full path to a file to exclude from on-demand scanning. Element may be repeated to list more files.	
<code>&lt;folder&gt;</code>	Full path to a directory to exclude from on-demand scanning. Element may be repeated to list more directories.	
<code>&lt;exclusions&gt;</code> <code>&lt;file_types&gt;</code> element		
<code>&lt;extensions&gt;</code>	Comma separated list of extensions to exclude from on-demand scanning.	
<code>&lt;sandboxing&gt;</code> element		
<code>&lt;enabled&gt;</code>	Enable or disable FortiSandbox configuration. Boolean value: [0   1]	
<code>&lt;sandbox_address&gt;</code>	Specify the IP address for FortiSandbox.	
<code>&lt;timeout&gt;</code>	Specify how long to wait in seconds for FortiSandbox results before allowing file access. When set to 0 seconds, file access is granted without waiting for FortiSandbox results. Range: 0-4294967295 in seconds	
<code>&lt;use_sandbox_signatures&gt;</code>	Enable or disable the use of FortiSandbox signatures. Boolean value: [0   1]	
<code>&lt;check_for_signatures_every&gt;</code>	Specify how often to check for FortiSandbox signatures when <code>&lt;use_sandbox_signatures&gt;</code> is set to 1. Boolean value: [0   1]	



XML Tag	Description	Default Value
<code>&lt;action_on_error&gt;</code>	Specify whether to block traffic when FortiSandbox finds errors. When this setting is 0, traffic is passed. When this setting is 1, traffic is blocked. Boolean value: [0   1]	0
<code>&lt;scan_usb&gt;</code>	Enable or disable sending files from USB drives to FortiSandbox for scanning. When this setting is 0, files are not scanned. When this setting is 1, files are scanned. Boolean value: [0   1]	0
<code>&lt;scan_mapped_drives&gt;</code>	Enable or disable sending files from mapped drives to FortiSandbox for scanning. When this setting is 0, files are not scanned. When this setting is 1, files are scanned. Boolean value: [0   1]	0

## On-Demand scans

The `<on_demand_scanning>` element defines how the antivirus scanner handles scanning of files manually requested by the end user.

```
<forticlient_configuration>
  <antivirus>
    <on_demand_scanning>
      <use_extreme_db>1</use_extreme_db>
      <on_virus_found>4</on_virus_found>
      <pause_on_battery_power>1</pause_on_battery_power>
      <signature_load_memory_threshold>8</signature_load_memory_threshold>
      <automatic_virus_submission>
        <enabled>0</enabled>
        <smtp_server>fortinetvirussubmit.com</smtp_server>
        <username />
        <password>Encrypted/NonEncrypted_PasswordString</password>
      </automatic_virus_submission>
      <compressed_files>
        <scan>1</scan>
        <maxsize>0</maxsize>
      </compressed_files>
      <riskware>
        <enabled>1</enabled>
      </riskware>
      <adware>
        <enabled>1</enabled>
      </adware>
      <heuristic_scanning>
        <level>3</level>
        <action>2</action>
      </heuristic_scanning>
      <scan_file_types>
        <all_files>1</all_files>
        <file_types>
```

```

        .BAT, .BIN, .BTM, .CDR, .CFM, .CHM, .CLA, .CLASS, .CMD, .CNN, .COM, .CPL, .CPT, .CPY,
        .CSC, .CSH, .CSS, .DEV, .DLL, .DOC, .DOT, .DRV, .DVB, .DWG, .EML, .EXE, .FON, .GMS, .G
        VB, .HLP, .HTA, .HTM, .HTML, .HTT, .HTW, .HTX, .HXS, .INF, .INI, .JPG, .JS, .JTD, .KSE
        , .LGP, .LIB, .LNK, .MDB, .MHT, .MHTM, .MHTML, .MOD, .MPD, .MPP, .MPT, .MRC, .OCX, .PI
        F, .PL, .PLG, .PM, .PNF, .PNP, .POT, .PPA, .PPS, .PPT, .PRC, .PWZ, .QLB, .QPW, .REG, .R
        TF, .SBF, .SCR, .SCT, .SH, .SHB, .SHS, .SHT, .SHTML, .SHW, .SIS, .SMM, .SWF, .SYS, .TD
        0, .TLB, .TSK, .TSP, .TT6, .VBA, .VBE, .VBS, .VBX, .VOM, .VSD, .VSS, .VST, .VWP, .VXD,
        .VXE, .WBK, .WBT, .WIZ, .WK, .WML, .WPC, .WPD, .WSC, .WSF, .WSH, .XLS, .XML, .XTP</ex
        tensions>
        <include_files_with_no_extension>0</include_files_with_no_extension>
    </file_types>
</scan_file_types>
<exclusions>
    <file></file>
    <folder></folder>
    <file_types>
        <extensions></extensions>
    </file_types>
</exclusions>
</on_demand_scanning>
</antivirus>
</forticlient_configuration>

```

The following table provides on-demand scan XML tags, the description, and the default value (where applicable).

XML Tag	Description	Default Value
<use_extreme_db>	Use the extreme database. Boolean value: [0   1]	1
<on_virus_found>	The action FortiClient will perform if a virus is found. Select one of the following: <ul style="list-style-type: none"> <li>4: quarantine</li> <li>5: deny access</li> </ul>	4
<pause_on_battery_power>	Suspend scanning when system is on battery. Boolean value: [0   1]	1

XML Tag	Description	Default Value
<code>&lt;signature_load_memory_threshold&gt;</code>	Configure the threshold used to control memory allocation mechanism for signature loading. When the physical machine has more memory than the threshold, it uses the static memory mechanism to load signatures one time, which ensures that the scan is efficient. When the physical machine has less memory than the threshold, it uses the dynamic memory mechanism to load the signatures, which ensures that the scan process does not use too much memory.	
<code>&lt;heuristic_scanning&gt;</code> elements		
<code>&lt;level&gt;</code>	Level is from 0 to 4. Applied to both real-time and on-demand scans. Select one of the following: <ul style="list-style-type: none"> <li>• 0: normal</li> <li>• 1: advanced heuristics on highly infected systems</li> <li>• 2: Minos engine heuristics on highly infected systems</li> <li>• 3: both advanced heuristics on highly infected systems and engine heuristics</li> <li>• 4: both, without waiting to determine if system is highly infected</li> </ul>	
<code>&lt;action&gt;</code>	The action FortiClient will perform if a virus is found. Select one of the following: <ul style="list-style-type: none"> <li>• 0: warning</li> <li>• 1: deny access</li> <li>• 2: quarantine</li> <li>• 3: submit only</li> </ul>	

XML Tag	Description	Default Value
<automatic_virus_submission> elements		
<enabled>	Send virus files found to FortiGuard servers. Boolean value: [0   1]	0
<smtp_server>	SMTP server IP address or FQDN.	fortinetvirussubmit.com
<password>	Either encrypted or non-encrypted password.	
<compressed_files> elements		
<scan>	Enable or disable scanning of compressed files. Boolean value: [0   1]	1
<maxsize>	Maximum compressed file size to scan in MB. A number up to 65535. 0 means no limit.	0
<riskware> elements		
<enabled>	Enable or disable scanning of riskware files. Boolean value: [0   1]	1
<adware> element		
<enabled>	Enable or disable scanning of adware files. Boolean value: [0   1]	1
<scan_file_types> element		
<all_files>	Enabled or disable scanning of all file types. If enabled, ignore the <file_types> element. Boolean value: [0   1]	1
<scan_file_types> <file_types> elements		
<extensions>	Comma separated list of extensions to scan.	

XML Tag	Description	Default Value
<code>&lt;include_files_with_no_extension&gt;</code>	Determines whether to scan files with no extension. Boolean value: [0   1]	0
<code>&lt;exclusions&gt;</code> elements		
<code>&lt;file&gt;</code>	Full path to a file to exclude from on-demand scanning. Wildcards are not accepted. Element may be repeated to list more files.	
<code>&lt;folder&gt;</code>	Full path to a directory to exclude from on-demand scanning. Wildcards are not accepted. Element may be repeated to list more directories.	
<code>&lt;exclusions&gt;</code> <code>&lt;file_types&gt;</code> element		
<code>&lt;extensions&gt;</code>	Comma separated list of extensions to exclude from on-demand scanning.	

## Scheduled scans

User may schedule scanning for viruses in one of three ways:

- Full scan  
Scan the entire system.
- Quick scan  
Scan only none-system files.
- Custom scan  
Scan a selection of files, as specified by user.

You can enable only one scheduled scan at a time. For example, you can enable a full scan and disable quick scans and custom scans.

Each of three scheduling options require specific combinations of several common elements, which define when scanning should occur. The common elements are described first. Other elements specific to the full and custom scans are described later

The factory default at the time of installation is to run a full scan on Mondays at 18:30 hours.

```
<forticlient_configuration>
  <antivirus>
    <scheduled_scans>
      <ignore_3rd_party_av_conflicts>1</ignore_3rd_party_av_conflicts>
      <quick>
```

```

        <enabled>1</enabled>
        <repeat>0</repeat>
        <time>19:30</time>
    </quick>
</scheduled_scans>
<scheduled_scans>
<ignore_3rd_party_av_conflicts>1</ignore_3rd_party_av_conflicts>
    <full>
        <enabled>1</enabled>
        <repeat>0</repeat>
        <time>19:30</time>
        <removable_media>1</removable_media>
        <network_drives>1</network_drives>
        <priority>2</priority>
    </full>
</scheduled_scans>
<scheduled_scans>
<ignore_3rd_party_av_conflicts>1</ignore_3rd_party_av_conflicts>
    <enabled>1</enabled>
    <repeat>0</repeat>
    <days>2</days>
    <time>19:30</time>
    <directory>c:\</directory>
    <priority>0</priority>
</directory>
</scheduled_scans>
</antivirus>
</forticlient_configuration>

```

Following is an example of the elements for a quick, monthly scan:

```

<scheduled_scans>
<ignore_3rd_party_av_conflicts>1</ignore_3rd_party_av_conflicts>
    <quick>
        <enabled>1</enabled>
        <repeat>2</repeat>
        <day_of_month>1</day_of_month>
        <time>19:30</time>
    </quick>
</scheduled_scans>

```

Following is an example of the elements for a quick, weekly scan:

```

<scheduled_scans>
<ignore_3rd_party_av_conflicts>1</ignore_3rd_party_av_conflicts>
    <quick>
        <enabled>1</enabled>
        <repeat>1</repeat>
        <days>1</days>
        <time>19:30</time>
    </quick>
</scheduled_scans>

```

Following is an example of the elements for a quick, daily scan:

```

<scheduled_scans>
<ignore_3rd_party_av_conflicts>1</ignore_3rd_party_av_conflicts>
    <quick>
        <enabled>1</enabled>
        <repeat>0</repeat>
        <time>19:30</time>
    </quick>
</scheduled_scans>

```

```

    </quick>
  </scheduled_scans>

```

The following table provides scheduled scan XML tags, the description, and the default value (where applicable).

XML Tag	Description	Default Value
common elements		
<enabled>	Enable or disable scheduled scan. You can enable only one of the following scan types at a time: quick scan, full scan, or custom scan. Boolean value: [ 0   1 ]	
<repeat>	Frequency of scans. The selected frequency affects the elements required to correctly configure the scan. Examples are provided before the table. Select one of the following: <ul style="list-style-type: none"> <li>0: daily</li> <li>1: weekly</li> <li>2: monthly</li> </ul>	
<days>	Day of the week to run scan. Used when <repeat> is set to 1 for weekly scans. Multiple days may be provided, separated by comma. Select one or more of the following: <ul style="list-style-type: none"> <li>1: Sunday</li> <li>2: Monday</li> <li>3: Tuesday</li> <li>4: Wednesday</li> <li>5: Thursday</li> <li>6: Friday</li> <li>7: Saturday</li> </ul>	
<day_of_month>	The day of the month to run a scan. Used when <repeat> is set to 2 for weekly scans. A number from 1 to 31.	
<time>	Time value in 24 hour clock.	

The following table provides element XML tags, the description, and the default value (where applicable).

XML Tag	Description	Default Value
<full> elements		
<removable_media>	Enable or disable scanning files on removable media. Boolean value: [ 0   1 ]	1
<network_drives>	Enable or disable scanning files on network drives. Boolean value: [ 0   1 ]	0

XML Tag	Description	Default Value
<code>&lt;priority&gt;</code>	Scan priority. Select one of the following: <ul style="list-style-type: none"> <li>0: normal</li> <li>1: low</li> <li>2: high</li> </ul>	0
<code>&lt;directory&gt;</code> elements		
<code>&lt;directory&gt;</code>	The full path to the directory to scan.	
<code>&lt;priority&gt;</code>	Scan priority. Select one of the following: <ul style="list-style-type: none"> <li>0: normal</li> <li>1: low</li> <li>2: high</li> </ul>	

## Email

Emails will be scanned for viruses based on the settings in the `<email>` `</email>` XML tags. You can configure virus scanning for SMTP, POP3, and Microsoft Outlook.

```

<forticlient_configuration>
  <antivirus>
    <email>
      <smtp>1</smtp>
      <pop3>1</pop3>
      <outlook>1</outlook>
      <wormdetection>
        <enabled>0</enabled>
        <action>0</action>
      </wormdetection>
      <heuristic_scanning>
        <enabled>0</enabled>
        <action>0</action>
      </heuristic_scanning>
      <mime_scanning>
        <enabled>1</enabled>
      </mime_scanning>
    </email>
  </antivirus>
</forticlient_configuration>

```

The following table provides email XML tags, the description, and the default value (where applicable).

XML Tag	Description	Default Value
<code>&lt;smtp&gt;</code>	When enabled, scan email messages sent through SMTP protocol. Boolean value: [ 0   1 ]	1



XML Tag	Description	Default Value
<pop3>	Determines whether to scan email messages received through POP3 protocol. Boolean value: [ 0   1 ]	1
<outlook>	Scan email files processed through Microsoft Outlook. Boolean value: [ 0   1 ]	1
<wormdetection> elements		
<enabled>	Scan for worm viruses. Boolean value: [ 0   1 ]	0
<action>	The action FortiClient will perform if a virus is found. Select either: <ul style="list-style-type: none"> <li>0: warn</li> <li>1: terminate process</li> </ul>	0
<heuristic_scanning> elements		
<enabled>	Enable or disable heuristics signatures. Boolean value: [ 0   1 ]	0
<action>	The action FortiClient will perform if a virus is found. Select either: <ul style="list-style-type: none"> <li>0: log and warn</li> <li>1: strip and quarantine</li> </ul>	0
<mime_scanning>	Enable or disable scanning for Multipurpose Internet Mail Extensions (MIME) files. Boolean value: [ 0   1 ]	

## Quarantine

The maximum age for quarantined files is specified in the <quarantine></quarantine> XML tags.

```
<forticlient_configuration>
  <antivirus>
    <quarantine>
      <cullage>100</cullage>
    </quarantine>
  </antivirus>
</forticlient_configuration>
```

The following table provides quarantine XML tag, the description, and the default value (where applicable).

XML Tag	Description	Default Value
<cullage>	How long to hold quarantined files, in days, before deleting them. A number from 1 to 365.	100

## Server

On Microsoft Windows servers, it may be desired to exclude system files from being scanned. These are configured in the `<server></server>` XML tags.

```
<forticlient_configuration>
  <antivirus>
    <server>
      <exchange>
        <integrate>0</integrate>
        <action>0</action>
        <excludefilesystemfromscanning>0</excludefilesystemfromscanning>
        <excludefileextensionsfromscanning>0</excludefileextensionsfromscanning>
      </exchange>
      <sqlserver>
        <excludefilesystemfromscanning>0</excludefilesystemfromscanning>
        <excludefileextensionsfromscanning>0</excludefileextensionsfromscanning>
      </sqlserver>
    </server>
  </antivirus>
</forticlient_configuration>
```

The following table provides server XML tags, the description, and the default value (where applicable).

XML Tag	Description	Default Value
<exchange> elements		
<integrate>	When the boolean value is set to 1 FortiClient integrates into Exchange Server. Boolean value: [ 0   1 ]	0
<action>	The action FortiClient will perform if a virus is found. Select either: <ul style="list-style-type: none"> <li>0: Quarantine</li> <li>1: Remove Attachment Only</li> </ul>	0
<excludefilesystemfromscanning>	Enable to exclude file system from scanning. Boolean value: [ 0   1 ]	0
<excludefileextensionsfromscanning>	Enable to exclude file extensions from scanning. Boolean value: [ 0   1 ]	0
<sqlserver> elements		

XML Tag	Description	Default Value
<code>&lt;excludefilesystemfromscanning&gt;</code>	Enable to exclude file system from scanning. Boolean value: [ 0   1 ]	0
<code>&lt;excludefileextensionsfromscanning&gt;</code>	Enable to exclude file extensions from scanning. Boolean value: [ 0   1 ]	0

## Single Sign-On Mobility Agent

Configuration elements for FortiClient Single Sign-On Mobility Agent are contained in the `<fssoma>` `</fssoma>` XML tags.

```
<forticlient_configuration>
  <fssoma>
    <enabled>0</enabled>
    <serveraddress>IP_or_FQDN</serveraddress>
    <presaredkey>Encrypted_Preshared_Key</presaredkey>
  </fssoma>
</forticlient_configuration>
```

The following table provides Single Sign-On XML tags, the description, and the default value (where applicable).

XML Tag	Description	Default Value
<code>&lt;enabled&gt;</code>	Enable or disable Single Sign On (SSO). Boolean value: [ 0   1 ]	0
<code>&lt;serveraddress&gt;</code>	FortiAuthenticator IP address or FQDN.	
<code>&lt;presaredkey&gt;</code>	Encrypted or unencrypted pre-shared key.	



To enable the FortiClient SSO Mobility agent service on the FortiAuthenticator, you must first apply the applicable FortiClient license for FortiAuthenticator. For more information, see the *FortiAuthenticator Administration Guide* at <http://docs.fortinet.com>. For information on purchasing a FortiClient license, please contact your authorized Fortinet reseller.

## Web Filtering

Web Filtering XML configurations are contained in the `<webfilter>` `</webfilter>` tags.

There are two main sections:

- General options  
Configuration elements that affect the whole of the web filtering service.

- Profiles

Defines one or more rules that will be applied to network traffic.

```
<forticlient_configuration>
  <webfilter>
    <enable_filter>1</enable_filter>
    <enabled>1</enabled>
    <log_all_urls>0</log_all_urls>
    <current_profile>0</current_profile>
    <partial_match_host>0</partial_match_host>
    <disable_when_managed>0</disable_when_managed>
    <max_violations>250</max_violations>
    <max_violations_age>7</max_violations_age>
    <block_malicious_websites>1</block_malicious_websites>
    <browser_read_time_threshold>180</browser_read_time_threshold>
    <profiles>
      <profile>
        <id>999</id>
        <use_exclusion_list>1</use_exclusion_list>
      </profile>
      <profile>
        <id>0</id>
        <cate_ver>6</cate_ver>
        <description>deny</description>
        <name>deny</name>
        <temp_whitelist_timeout>300</temp_whitelist_timeout>
        <log_all_urls>1</log_all_urls>
        <log_user_initiated_traffic>1</log_user_initiated_traffic>
        <categories>
          <fortiguard>
            <enabled>1</enabled>
            <url>fgdl.fortigate.com</url>
            <rate_ip_addresses>1</rate_ip_addresses>
          </fortiguard>
          <category>
            <id>1</id>
            <action>deny</action>
          </category>
          <category>
            <id>2</id>
            <action>deny</action>
          </category>
          <category>
            <id>3</id>
            <action>deny</action>
          </category>
          <category>
            <id>4</id>
            <action>deny</action>
          </category>
          <category>
            <id>5</id>
            <action>deny</action>
          </category>
        </categories>
        <urls>
          <url>
```

```

        <address>
        <![CDATA[www.777.com]]>
        </address>
        <type>simple</type>
        <action>deny</action>
    </url>
    <url>
        <address>
        <![CDATA[www.fortinet.com]]>
        </address>
        <type>simple</type>
        <action>allow</action>
    </url>
</urls>
<safe_search>
    <enabled>0</enabled>
    <search_engines>
        <enabled>0</enabled>
    </search_engines>
    <youtube_education_filter>
        <enabled>0</enabled>
        <filter_id>
            <![CDATA[]]>
        </filter_id>
    </youtube_education_filter>
</safe_search>
</profile>
</profiles>
</webfilter>
</forticlient_configuration>

```

The following table provides Web Filtering XML tags, the description, and the default value (where applicable).

XML Tag	Description	Default Value
<enable_filter>	Enable or disable Web Filtering. Boolean value: [ 0   1 ]	1
<enabled>	Enable or disable FortiGuard query- ing service. Boolean value: [ 0   1 ]	1
<log_all_urls>	Record all visited URLs to the log file, both blocked and allowed. Boolean value: [ 0   1 ]	0
<current_ profile>	Currently selected profile ID (optional). The default is 0 when FortiClient is standalone. If using the advanced configuration on the FortiGate (for Endpoint Control), set this to 1000. The value should always match the <profile><id> selected.	

XML Tag	Description	Default Value
<code>&lt;partial_match_host&gt;</code>	A hostname that is a substring of the specified path is treated as a full match. Boolean value: [ 0   1 ]	0
<code>&lt;disable_when_managed&gt;</code>	If set to 1 (true), Web Filtering will be disabled when FortiClient is registered to a FortiGate using End-point Control. Boolean: [ 0   1 ]	
<code>&lt;max_violations&gt;</code>	Maximum number of violations stored at any one. A number from 250 to 5000.	5000
<code>&lt;max_violation_age&gt;</code>	Maximum age in days of a violation record before it is culled. A number from 1 to 90.	90
<code>&lt;block_malicious_websites&gt;</code>	Configure whether to block web sites with security risk categories (group 5). When this setting is 0, do not block web sites with security risk categories. When this setting is 1, block web sites with security risk categories. Boolean: [ 0   1 ]	
<code>&lt;browser_read_time_threshold&gt;</code>	Configure the threshold in seconds for web browser to be considered idle. When a web browser is idle more than the threshold, the web browser is considered idle, and time is not calculated.	90
<code>&lt;fortiguard&gt;</code> elements		
<code>&lt;url&gt;</code>	IP address or FQDN of the FortiGuard server.	fgd1.fortigate.com
<code>&lt;enabled&gt;</code>	Enable or disable use of FortiGuard servers. Boolean value: [ 0   1 ]	1
<code>&lt;rate_ip_addresses&gt;</code>	Rate IP addresses. Boolean value: [ 0   1 ]	1
<code>&lt;profiles&gt;&lt;profile&gt;&lt;safe_search&gt;</code> element		

XML Tag	Description	Default Value
<code>&lt;enabled&gt;</code>	Enable or disable SafeSearch. Boolean value: [0   1]	
<code>&lt;profiles&gt;&lt;profile&gt;&lt;safe_search&gt;&lt;search_engines&gt;&lt;engine&gt;</code> element		
<code>&lt;enabled&gt;</code>	Enable or disable SafeSearch for the predefined search engines. Boolean value: [0   1]	

The `<profiles>` XML element may have one or more profiles, defined in the `<profile>` tag. Each `<profile>`, in turn, has one or more `<category>`, `<url>` and `<safe_search>` tags, along with other elements.

The following table provides profile XML tags, the description, and the default value (where applicable).

XML Tag	Description	Default Value
<code>&lt;profile&gt;</code> elements		
<code>&lt;id&gt;</code>	Unique ID. A number to define the profile.	
<code>&lt;cate_ver&gt;</code>	FortiGuard category version used in this profile. A number.	6
<code>&lt;description&gt;</code>	Summary describing this profile.	
<code>&lt;name&gt;</code>	A descriptive name for the profile.	
<code>&lt;temp_whitelist_timeout&gt;</code>	The duration, in seconds, of a bypass that is applied to a page that generated a <i>warning</i> , but for which the user selected <i>continue</i> .	300
<code>&lt;log_all_urls&gt;</code>	Configure whether to log all URLs. When this setting is 0, only URLs are logged as specified by per-category or per-URL settings. When this setting is 1, all URLs are logged. Boolean value: [0   1]	
<code>&lt;log_user_initiated_traffic&gt;</code>	Configure what traffic to record. When this setting is 0, record all traffic. When this setting is 1, record only traffic initiated by the user. Boolean value: [0   1]	
<code>&lt;profile&gt;&lt;categories&gt;&lt;category&gt;</code> elements		
<code>&lt;id&gt;</code>	Unique ID. A number. The valid set of category IDs is predefined, and is listed in exported configuration files.	

XML Tag	Description	Default Value
<code>&lt;action&gt;</code>	Action to perform on matching network traffic. Select one of the following:  allow  deny  warn  monitor	
<code>&lt;profile&gt;&lt;urls&gt;&lt;url&gt;</code> elements		
<code>&lt;address&gt;</code>	The web address in which <code>&lt;action&gt;</code> (allow or deny) will be performed. This should be wrapped in a CDATA tag. For example: <code>&lt;![CDATA[www.777.com]]&gt;</code>	
<code>&lt;action&gt;</code>	Action to perform on matching network traffic. Select either: [allow   deny]	

The `<safe_search>` element has two main components:

- Search engines `<search_engines>`  
Users may define safe search parameters for each of the popular search engines: Bing and Yandex. Subsequent use of the engines for web searches will have SafeSearch enabled.
- YouTube education filter `<youtube_education_filter>`  
Educational institutions with valid YouTube education ID can provide this in the `<youtube_education_filter>` element to restrict YouTube contents appropriately.

The following table provides profile XML tags and the description. See the `<safe_search>` listing in the previous pages for examples of each tag.

XML Tag	Description	Default Value
<code>&lt;profiles&gt;&lt;profile&gt;&lt;safe_search&gt;&lt;search_engines&gt;&lt;engine&gt;</code> elements		
<code>&lt;name&gt;</code>	Name of the SafeSearch profile.	
<code>&lt;host&gt;</code>	The FQDN of the search engine. FortiClient will monitor attempts to visit this address.	
<code>&lt;url&gt;</code>	The URL substring to match or monitor, along with the FQDN.	
<code>&lt;query&gt;</code>	The query string that will be appended to the URL.	
<code>&lt;safe_search_string&gt;</code>	The correct safe search string that will be appended to the URL for the specified engine.	



XML Tag	Description	Default Value
<code>&lt;cookie_name&gt;</code>	The name of the cookie to send the search engine.	
<code>&lt;cookie_value&gt;</code>	The cookie value to send the search engine.	
<code>&lt;profiles&gt;&lt;profile&gt;&lt;safe_search&gt;&lt;youtube_education_filter&gt;</code>	elements	
<code>&lt;enabled&gt;</code>	Enable YouTube education filter. Boolean value: [0   1]	
<code>&lt;filter_id&gt;</code>	The institutions education identifier.	

Other than the `<name>` and `<enabled>` elements, the values for each of the elements in the previous table should be wrapped in `<![CDATA[]]>` XML tags. Here is an example for a `<host>` element taken from the `<safe_search>` listing.

```
<host><![CDATA[yandex\..*]]></host>
```

See <http://support.google.com/youtube/bin/answer.py?hl=en&answer=2592715> for more information on YouTube for schools and the education filter.

The following is a list of all Web Filter categories including the category `<id>` and category name:

```
0 ==> Unrated
1 ==> Drug Abuse
2 ==> Alternative Beliefs
3 ==> Hacking
4 ==> Illegal or Unethical
5 ==> Discrimination
6 ==> Explicit Violence
7 ==> Abortion
8 ==> Other Adult Materials
9 ==> Advocacy Organizations
11 ==> Gambling
12 ==> Extremist Groups
13 ==> Nudity and Risque
14 ==> Pornography
15 ==> Dating
16 ==> Weapons (Sales)
17 ==> Advertising
18 ==> Brokerage and Trading
19 ==> Freeware and Software Downloads
20 ==> Games
23 ==> Web-based Email
24 ==> File Sharing and Storage
25 ==> Streaming Media and Download
26 ==> Malicious Websites
28 ==> Entertainment
29 ==> Arts and Culture
30 ==> Education
31 ==> Finance and Banking
33 ==> Health and Wellness
34 ==> Job Search
35 ==> Medicine
36 ==> News and Media
```

```
37 ==> Social Networking
38 ==> Political Organizations
39 ==> Reference
40 ==> Global Religion
41 ==> Search Engines and Portals
42 ==> Shopping and Auction
43 ==> General Organizations
44 ==> Society and Lifestyles
46 ==> Sports
47 ==> Travel
48 ==> Personal Vehicles
49 ==> Business
50 ==> Information and Computer Security
51 ==> Government and Legal Organizations
52 ==> Information Technology
53 ==> Armed Forces
54 ==> Dynamic Content
55 ==> Meaningless Content
56 ==> Web Hosting
57 ==> Marijuana
58 ==> Folklore
59 ==> Proxy Avoidance
61 ==> Phishing
62 ==> Plagiarism
63 ==> Sex Education
64 ==> Alcohol
65 ==> Tobacco
66 ==> Lingerie and Swimsuit
67 ==> Sports Hunting and War Games
68 ==> Web Chat
69 ==> Instant Messaging
70 ==> Newsgroups and Message Boards
71 ==> Digital Postcards
72 ==> Peer-to-peer File Sharing
75 ==> Internet Radio and TV
76 ==> Internet Telephony
77 ==> Child Education
78 ==> Real Estate
79 ==> Restaurant and Dining
80 ==> Personal Websites and Blogs
81 ==> Secure Websites
82 ==> Content Servers
83 ==> Child Abuse
84 ==> Web-based Applications
85 ==> Domain Parking
86 ==> Spam URLs
87 ==> Personal Privacy
```

## Application Firewall

Application Firewall configuration data is contained in `<firewall>` `</firewall>` XML tags.

The set of elements may be grouped into two:

- General options

Options that apply to the entire firewall activities.

- Profiles

Defines the applications and the actions to apply to them.

```
<forticlient_configuration>
  <firewall>
    <enabled>1</enabled>
    <app_enabled>1</app_enabled>
    <enable_exploit_signatures>0</enable_exploit_signatures>
    <candc_enabled>1</candc_enabled>
    <current_profile>0</current_profile>
    <default_action>Pass</default_action>
    <show_bubble_notifications>0</show_bubble_notifications>
    <max_violations>250</max_violations>
    <max_violations_age>7</max_violations_age>
    <profiles>
      <profile>
        <id>1000</id>
        <rules>
          <rule>
            <enabled>1</enabled>
            <action>Block</action>
            <compliance>1</compliance>
            <application>
              <id>34038,34039</id>
            </application>
          </rule>
          <rule>
            <action>Block</action>
            <compliance>1</compliance>
            <enabled>1</enabled>
            <category>
              <id>8</id>
            </category>
          </rule>
          <rule>
            <action>Pass</action>
            <compliance>1</compliance>
            <enabled>1</enabled>
            <category>
              <id>7,19,29</id>
            </category>
          </rule>
          <rule>
            <action>Block</action>
            <compliance>0</compliance>
            <enabled>1</enabled>
            <category>
              <id>1,2,3</id>
            </category>
          </rule>
          <rule>
            <action>Pass</action>
            <compliance>0</compliance>
            <enabled>1</enabled>
          </rule>
        </rules>
      </profile>
    </profiles>
  </firewall>
</forticlient_configuration>
```

```

        <category>
          <id>All</id>
        </category>
      </rule>
    </rules>
  </profile>
</profiles>
</firewall>
</forticlient_configuration>

```

The following table provides Application Firewall XML tags, the description, and the default value (where applicable).

XML Tag	Description	Default Value
<enabled>	Enable or disable Application Firewall. This setting allows FortiClient 5.4 to be compatible with FortiGate 5.2. Boolean value: [0   1]	1
<app_enabled>	Enable or disable Application Firewall. Boolean value: [0   1]	
<enable_exploit_signatures>	Enable or disable detection of evasive exploits. When set to 1, evasive exploits are detected. When set to 0, evasive exploits are not detected. Boolean value: [0   1]	0
<candc_enabled>	Enable or disable detection of a connection to a bot-net command and control server. Set to 0 to disable detection of a connection. Set to 1 to enable detection of a connection. Boolean value: [0   1]	
<current_profile>	Currently selected profile ID.	
<default_action>	Action to enforce on traffic that does not match any of the profiles defined. Select one of the following: <ul style="list-style-type: none"> <li>block</li> <li>reset</li> <li>pass</li> </ul>	pass
<show_bubble_notifications>	Display a bubble message each time an application is blocked for matching a profile. Boolean value: [0   1]	

XML Tag	Description	Default Value
<code>&lt;max_violations&gt;</code>	Maximum number of violations stored at any one. A number from 250 to 5000	5000
<code>&lt;max_violation_age&gt;</code>	Maximum age in days of a violation record before it is culled. A number from 1 to 90.	90

The `<profiles>` tag may contain one or more `<profile>` tags, each of which has a `<rules>` element. The `<rules>` element may, itself, have zero or more `<rule>` tags.

The following filter elements may be used to define applications in a `<rule>` tag:

```

<category>
<vendor>
<behavior>
<technology>
<protocol>
<application>
<popularity>

```

If the `<application>` element is present, all other sibling elements (listed above) will be ignored. If it is not, a given application must match all of the provided filters to trigger the rule.

Each of these seven elements is a container for the tag: `<ids>`, which is a list of the identifiers (numbers) selected for that particular filter. The full `<firewall>` profile listed at the beginning of this section shows several examples of the use of filters within the `<rule>` element. Using an `<ids>` value all will select all matching applications.

The following table provides profile element XML tags, the description, and the default value (where applicable).

XML Tag	Description	Default Value
<code>&lt;profile&gt;</code> element		
<code>&lt;id&gt;</code>	Unique ID. A unique ID number.	
<code>&lt;profile&gt;&lt;rules&gt;&lt;rule&gt;</code> elements		
<code>&lt;action&gt;</code>	Action to enforce on traffic that matches this rule. Select one of the following: <ul style="list-style-type: none"> <li>• block</li> <li>• reset</li> <li>• pass</li> </ul>	
<code>&lt;compliance&gt;</code>	Specifies whether the rule is a compliance rule or a regular rule. When set to 1, this is a compliance rule. When set to 0 or the tag doesn't exist, this is a regular rule for FortiClient profile. For more information, see the <i>FortiClient Administration Guide</i> . Boolean value: [0   1]	

XML Tag	Description	Default Value
<enabled>	Enable or disable this rule. Boolean value: [0   1]	1
<category>	Categories of the applications to apply <action> on.	csv list
<vendor>	Vendors of the applications to apply <action> on.	csv list
<behavior>	Behavior of the applications to apply <action> on.	csv list
<technology>	Technologies used by the applications to apply <action> on.	csv list
<protocol>	Protocols used by the applications to apply <action> on.	csv list
<application>	Identifiers (IDs) of the applications to apply <action> on.	csv list
<popularity>	Popularity of the applications to apply <action> on.	csv list

### Rule example

In the following example, the first rule is used for compliance. The second rule is a regular rule and not used for compliance.

```

<rules>
  <rule>
    <enabled>1</enabled>
    <action>block | warn | monitor</action>
    <compliance>1</compliance>
    <filter>
      <application>
        <ids>36373</ids>
      </application>
    </filter>
  </rule>
  <rule>
    <enabled>1</enabled>
    <action>block | warn | monitor</action>
    <filter>
      <category>
        <ids>1</ids>
      </category>
    </filter>
  </rule>
</rules>

```

## Vulnerability Scan

Configurations for Vulnerability Scan are contained in the `<vulnerability_scan>` XML tags.

```
<forticlient_configuration>
  <vulnerability_scan>
    <enabled>1</enabled>
    <scan_on_fgt_registration>1</scan_on_fgt_registration>
    <scan_on_signature_update>1</scan_on_signature_update>
    <auto_patch>
      <level>critical</level>
    </auto_patch>
    <windows_update>1</windows_update>
    <exempt_manual>1</exempt_manual>
    <exemptions>
      <exemption>Google Chrome</exemption>
      <exemption>Java JDK</exemption>
    </exemptions>
    <exempt_no_auto_patch>1</exempt_no_auto_patch>
    <scheduled_scans>
      <schedule>
        <enable_schedule>1</enable_schedule>
        <repeat>1</repeat>
        <day>1</day>
        <time>19:30</time>
      </schedule>
    </scheduled_scans>
  </vulnerability_scan>
</forticlient_configuration>
```

The following table provides Vulnerability Scan XML tags, the description, and the default value (where applicable).

XML Tag	Description	Default Value
<code>&lt;enabled&gt;</code>	Vulnerability Scan is enabled.	
<code>&lt;scan_on_fgt_registration&gt;</code>	Specifies whether to start a vulnerability scan when FortiClient registers to FortiGate. When set to 1, start vulnerability scan on registration. When set to 0, do not start a vulnerability scan on registration. Boolean value: [0   1]	
<code>&lt;scan_on_signature_update&gt;</code>	Specifies whether to start a vulnerability scan when signatures are updated. When set to 1, start vulnerability scan when signatures updated. When set to 0, do not start a vulnerability scan when signatures updated. Boolean value: [0   1]	

XML Tag	Description	Default Value
<code>&lt;auto_patch&gt;</code>	Specifies whether to automatically install patches. Use <code>&lt;level&gt;</code> to enable and disable automatic patch installation.	
<code>&lt;level&gt;</code>	Specify whether to patch vulnerabilities with a severity higher than the defined level. Disabled when set to 0, and patches are not automatically installed when vulnerabilities are detected. When set to <code>info</code> , all patches are automatically installed when vulnerabilities are detected. Select one of the following: <ul style="list-style-type: none"> <li>0</li> <li><code>critical</code></li> <li><code>high</code></li> <li><code>medium</code></li> <li><code>low</code></li> <li><code>info</code></li> </ul>	
<code>&lt;windows_update&gt;</code>	Specifies whether to scan both Windows updates and third-party application updates. When set to 1, scan both Windows updates and third-party application updates. When set to 0, scan only third-party application updates. Boolean value: [0   1]	
<code>&lt;exempt_manual&gt;</code>	Specifies whether to exempt from vulnerability scanning any applications that require the endpoint user to manually install patches. Boolean value: [0   1]	
<code>&lt;exemptions&gt;</code>	Identifies the names of applications that are exempted.	
<code>&lt;exempt_no_auto_patch&gt;</code>	Specifies whether to exempt any applications that FortiClient can automatically patch from vulnerability scanning. Boolean value: [0   1]	
<code>&lt;scheduled_scans&gt;</code>	<code>&lt;schedule&gt;</code> elements  Currently there can only be one scheduled item.	
<code>&lt;enable_schedule&gt;</code>	Enable or disable scheduled vulnerability scans. Boolean value: [0   1]	
<code>&lt;repeat&gt;</code>	Frequency of scans. Select one of the following: <ul style="list-style-type: none"> <li>0: daily scan</li> <li>1: weekly scan</li> <li>2: monthly scan</li> </ul>	



XML Tag	Description	Default Value
<day>	<p>Used only for weekly scan and monthly scan. If the &lt;repeat&gt; tag is set to 0 (daily), the &lt;day&gt; tag is ignored.</p> <p>If the &lt;repeat&gt; tag is set to 1 (weekly), &lt;day&gt; is the day of the week to run scan. Select one of the following:</p> <ul style="list-style-type: none"> <li>• 1: Sunday</li> <li>• 2: Monday</li> <li>• 3: Tuesday</li> <li>• 4: Wednesday</li> <li>• 5: Thursday</li> <li>• 6: Friday</li> <li>• 7: Saturday</li> </ul> <p>If the &lt;repeat&gt; tag is set to 2 (monthly), &lt;day&gt; is the date of each month to run a scan. A number from 1 to 31.</p>	The default is the date the policy was installed from FortiGate.
<time>	The time when to run the scan. Specify a time value in 24 hour clock.	The default is the time the policy was installed from FortiGate.

### Daily scan example

```
<schedule>
  <repeat>0</repeat>
  <time>19:30</time>
</schedule>
```

## Sandboxing

Sandboxing general attributes are listed below.

```
<forticlient_configuration>
  <sandboxing>
    <enabled>1</enabled>
    <type>appliance</type>
    <address>n.n.n.n</address>
    <response_timeout>30</response_timeout>
    <when>
      <executables_on_removable_media>1</executables_on_removable_media>
      <executables_on_mapped_nw_drives>1</executables_on_mapped_nw_drives>
      <web_downloads>1</web_downloads>
      <email_downloads>1</email_downloads>
    </when>
    <exceptions>
      <exclude_files_from_trusted_sources>1</exclude_files_from_trusted_sources>
      <exclude_files_and_folders>0</exclude_files_and_folders>
      <folders>
        <folder>C:\path1\to\folder\,C:\path2\to\folder</folder>
```

```

    </folders>
    <files>
      <file>C:\path\to\file1.txt, C:\path\to\file2.txt</file>
    </files>
  </exceptions>
  <remediation>
    <action>quarantine</action>
    <on_error>block</on_error>
  </remediation>
</sandboxing>
</forticlient_configuration>

```

The following table provides endpoint control XML tags, the description, and the default value (where applicable).

XML Tag	Description	Default Value
<enabled>	Enable or disable Sandbox Detection. Boolean value: [0   1]	
<type>	Specify the type of FortiSandbox unit.	
<address>	Specify the IP address or FQDN of the FortiSandbox unit.	
<response_timeout>	Specify the response timeout value in seconds. File access will be allowed if FortiSandbox results are not received when the timeout expires. Set to -1 to infinitely restrict access to the file.	
<when> elements		
<executables_on_removable_media>	Enable or disable Sandbox Detection for executable files on removable media. Boolean value: [0   1]	
<executables_on_mapped_nw_drives>	Enable or disable Sandbox Detection for executable files on mapped drives. Boolean value: [0   1].	
<web_downloads>	Enable or disable Sandbox Detection for files downloaded from the Internet. Boolean value: [0   1].	
<email_downloads>	Enable or disable Sandbox Detection for files downloaded from email. Boolean value: [0   1].	
<exceptions> elements		
<exclude_files_from_trusted_sources>	Enable or disable an exclusion list of trusted sources. When enabled, the list of trusted sources is excluded from Sandbox Detection. Boolean value: [0   1].	

XML Tag	Description	Default Value
<code>&lt;exclude_files_and_folders&gt;</code>	Enable or disable an exclusion list of files and folders. When enabled, the list of files and folders are excluded from Sand-box Detection. Boolean value: [0   1].	
<code>&lt;files&gt;</code>	Specify a list of files to exclude. Separate multiple folders with a comma. Example: C:\path\to\file1.txt, C:\path\to\file2.txt	
<code>&lt;folders&gt;</code>	Specify a list of folders to exclude. Separate multiple folders with a comma. Example: C:\path1\to\folder\, C:\path2\to\folder\	
<code>&lt;remediation&gt;</code> elements		
<code>&lt;action&gt;</code>	Specify how to handle infected files. Infected files can be quarantined. Alternately you can allow alert endpoint users about infected files, but allow access to infected files. Options: <ul style="list-style-type: none"> <li>quarantine</li> <li>alert</li> </ul>	
<code>&lt;on_error&gt;</code>	Specify how to handle files when FortiSandbox cannot be reached. You can block or allow access to files. Options: <ul style="list-style-type: none"> <li>block</li> <li>allow</li> </ul>	

# FortiClient XML Configurations

The FortiClient configuration file is user editable. The file uses XML format for easy parsing and validation. The configuration file is inclusive of all client configurations, and references the client certificates.

## Design considerations

### Input validation

The import function performs basic validation, and writes to log when errors or warnings are found. Default values for omitted items are defined for VPN connections. For other settings omitted values are ignored.

### Handling of password fields

When exporting, the password and username fields will be encrypted (prefixed with “Enc”). However, the import function is able to take either the clear text or encrypted format.

### Segment of configuration file

It is valid to import the segment of a configuration file. However, the segment should follow the syntax and level defined in this document. For example, this is a valid segment:

```
<?xml version="1.0" encoding="utf-8"?>
<forticlient_configuration>
  <VPN>
    <SSLVPN>
      <connections>
        <connection>
          // connection 1
        </connection>
      </connections>
    </SSLVPN>
  </VPN>
</forticlient_configuration>
```

This is not a valid segment:

```
<?xml version="1.0" encoding="utf-8"?>
<connections>
  <connection>
    // connection 1
  </connection>
</connections>
```

### Client certificate

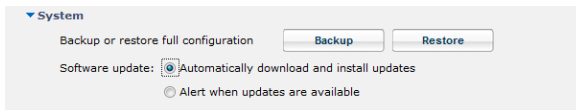
The configuration file will include the client certificate(s) when exported in an encrypted format.

# Back Up or Restore the Configuration File

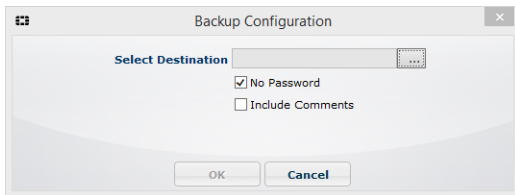
## Back up the full configuration file

To back up the full configuration file:

1. Go to *File > Settings*.
2. Expand *System*, and click *Backup*.



3. Click the *Browse* button to locate and select the file destination.
4. Choose one of the following options:
  - Select the *No Password* checkbox to save the file in an unencrypted format. You can also include comments in the configuration file.
  - Clear the *No Password* checkbox to save the file in an encrypted format with a password.

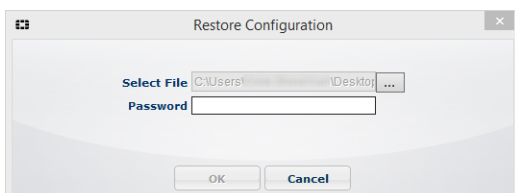


5. Click *OK*.

## Restore the full configuration file

To restore a full configuration file:

1. Go to *File > Settings*.
2. Expand *System*, and click *Restore*.



3. Locate and select the file.
4. If the configuration was protected with a password, a password text box is displayed. Enter the password used to encrypt the backup configuration file..
5. Click *OK*.

## Back up and restore command line utility commands and syntax

Fortinet provides administrators the ability to import and export configurations via the CLI. The `fcconfig` utility can be run locally or remotely as the system user (or admin user) to import or export the configuration file. In Microsoft Windows, the `fcconfig` utility is located in the `C:\Program Files (x86)\Fortinet\FortiClient>` directory. In Mac OS X, the `fcconfig` utility is located in the `/Library/Application Support/Fortinet/FortiClient/bin` directory.

The following commands are available for use:

- Backup the configuration file:  
`FCConfig -m all -f <filename> -o export -i 1`
- Backup the configuration file (encrypted)  
`FCConfig -m all -f <filename> -o export -i 1 -p <encrypted password>`
- Restore the configuration file  
`FCConfig -m all -f <filename> -o import -i 1`
- Restore the configuration file (encrypted)  
`FCConfig -m all -f <filename> -o import -i 1 -p <encrypted password>`
- Export the VPN tunnel configuration  
`FCConfig -m vpn -f <filename> -o exportvpn -i 1`
- Export the VPN tunnel configuration (encrypted)  
`FCConfig -m vpn -f <filename> -o exportvpn -i 1 -p <encrypted password>`
- Import the VPN tunnel configuration  
`FCConfig -m vpn -f <filename> -o importvpn -i 1`
- Import the VPN tunnel configuration (encrypted)  
`FCConfig -m vpn -f <filename> -o importvpn -i 1 -p <encrypted password>`

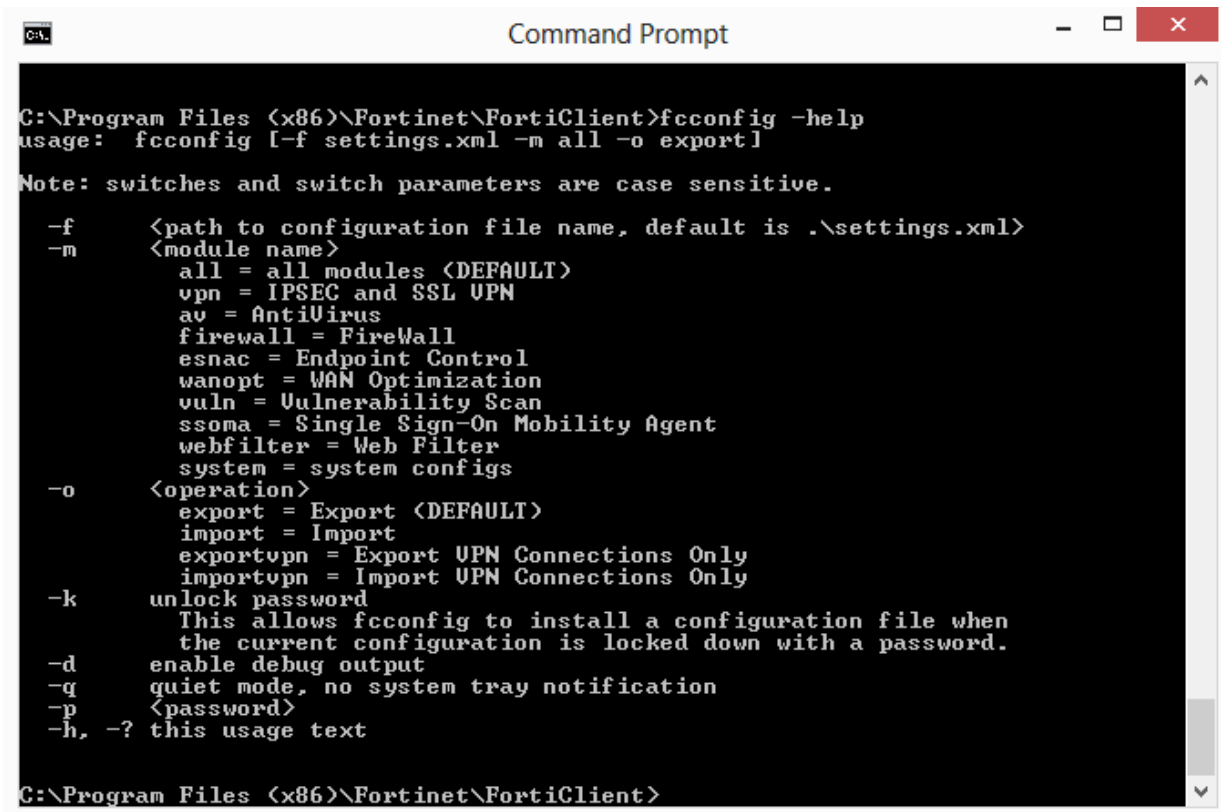


Switches and switch parameters are case sensitive.



Backup and restore CLI commands are an advanced configuration option

---



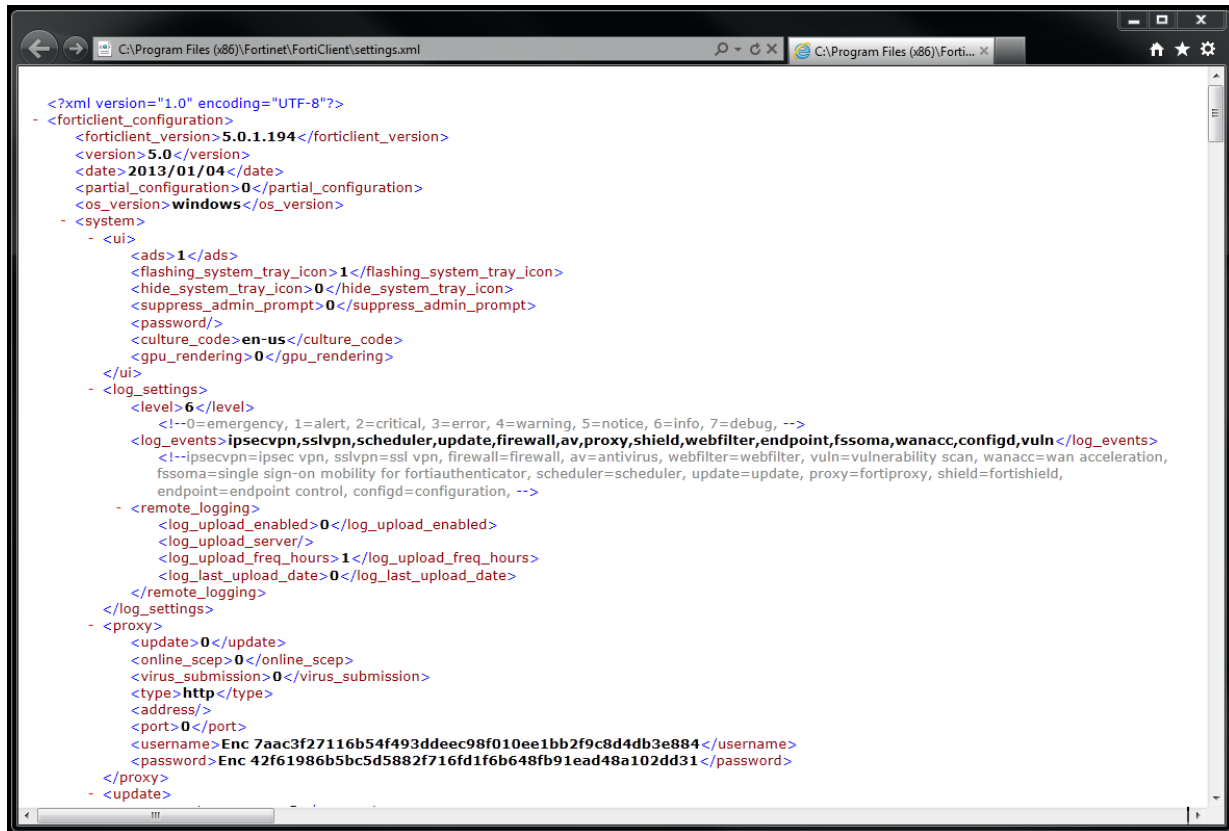
```
C:\Program Files (x86)\Fortinet\FortiClient>fcconfig -help
usage: fcconfig [-f settings.xml -m all -o export]

Note: switches and switch parameters are case sensitive.

-f      <path to configuration file name, default is .\settings.xml>
-m      <module name>
        all = all modules (DEFAULT)
        vpn = IPSEC and SSL VPN
        av = AntiVirus
        firewall = FireWall
        esnac = Endpoint Control
        wanopt = WAN Optimization
        vuln = Vulnerability Scan
        ssoma = Single Sign-On Mobility Agent
        webfilter = Web Filter
        system = system configs
-o      <operation>
        export = Export (DEFAULT)
        import = Import
        exportvpn = Export VPN Connections Only
        importvpn = Import VPN Connections Only
-k      unlock password
        This allows fcconfig to install a configuration file when
        the current configuration is locked down with a password.
-d      enable debug output
-q      quiet mode, no system tray notification
-p      <password>
-h, -?  this usage text

C:\Program Files (x86)\Fortinet\FortiClient>
```

The command `fcconfig -f settings.xml -m all -o export` will export the configuration as XML file in the FortiClient directory.



```
<?xml version="1.0" encoding="UTF-8"?>
- <forticlient_configuration>
  <forticlient_version>5.0.1.194</forticlient_version>
  <version>5.0</version>
  <date>2013/01/04</date>
  <partial_configuration>0</partial_configuration>
  <os_version>windows</os_version>
- <system>
  - <ui>
    <ads>1</ads>
    <flashing_system_tray_icon>1</flashing_system_tray_icon>
    <hide_system_tray_icon>0</hide_system_tray_icon>
    <suppress_admin_prompt>0</suppress_admin_prompt>
    <password/>
    <culture_code>en-us</culture_code>
    <gpu_rendering>0</gpu_rendering>
  </ui>
  - <log_settings>
    <level>6</level>
    <!--0=emergency, 1=alert, 2=critical, 3=error, 4=warning, 5=notice, 6=info, 7=debug, -->
    <log_events>ipsecvpn,sslvpn,scheduler,update,firewall,av,proxy,shield,webfilter,endpoint,fssoma,wanacc,configd,vuln</log_events>
    <!--ipsecvpn=ipsec vpn, sslvpn=ssl vpn, firewall=firewall, av=antivirus, webfilter=webfilter, vuln=vulnerability scan, wanacc=wan acceleration,
    fssoma=single sign-on mobility for fortiauthenticator, scheduler=scheduler, update=update, proxy=fortiproxy, shield=fortishield,
    endpoint=endpoint control, configd=configuration, -->
  - <remote_logging>
    <log_upload_enabled>0</log_upload_enabled>
    <log_upload_server/>
    <log_upload_freq_hours>1</log_upload_freq_hours>
    <log_last_upload_date>0</log_last_upload_date>
  </remote_logging>
  </log_settings>
- <proxy>
  <update>0</update>
  <online_scep>0</online_scep>
  <virus_submission>0</virus_submission>
  <type>http</type>
  <address/>
  <port>0</port>
  <username>Enc 7aac3f27116b54f493ddeec98f010ee1bb2f9c8d4db3e884</username>
  <password>Enc 42f61986b5bc5d5882f716fd1f6b648fb91ead48a102dd31</password>
</proxy>
- <update>
```

## Add XML to advanced profiles in EMS

You can add custom XML to a profile in EMS by using an advanced profile.



To reduce the size of the FortiClient XML configuration file, you can delete all help text found within the `<!-- . . . -->` comment tags.

### To create an advanced profile:

1. In EMS, go to *Endpoint Profiles > Add a new profile*.
2. Click *Advanced*.
3. On the *XML Configuration* tab, click *Edit*.  
Two panes are displayed. Use the pane on the right-hand side to edit XML.
4. On the *XML Configuration* tab, overwrite the XML by pasting the XML from your custom XML configuration file into the right-hand pane.
  - a. Open the FortiClient XML configuration file in a source code editor.
  - b. Copy the FortiClient XML.
  - c. Paste the FortiClient XML into the *XML Configuration* tab.
5. Click *Test XML*.



When valid, an *XML is valid* message is displayed. When invalid, an *XML is invalid* message is displayed. The XML must be valid before you can save the profile.

6. When the XML is valid, click *Save Profile*.

# Advanced Features

## Advanced features (Windows)

### Connect VPN before logon (AD environments)

The VPN `<options>` XML tag holds global information controlling VPN states. The VPN will connect first, then logon to AD/Domain.

```
<forticlient_configuration>
  <vpn>
    <options>
      <show_vpn_before_logon>1</show_vpn_before_logon>
      <use_windows_credentials>1</use_windows_credentials>
    </options>
  </vpn>
</forticlient_configuration>
```

### Create a redundant IPsec VPN

To use VPN resiliency/redundancy, you will configure a list of FortiGate IP/FQDN servers, instead of just one:

```
<forticlient_configuration>
  <vpn>
    <ipsecvpn>
      <options>
        ...
      </options>
      <connections>
        <connection>
          <name>psk_90_1</name>
          <type>manual</type>
          <ike_settings>
            <prompt_certificate>0</prompt_certificate>
            <server>10.10.90.1;ipsecdemo.fortinet.com;172.17.61.143</server>
            <redundantsortmethod>1</redundantsortmethod>
            ...
          </ike_settings>
        </connection>
      </connections>
    </ipsecvpn>
  </vpn>
</forticlient_configuration>
```

This is a balanced, but incomplete XML configuration fragment. All closing tags are included, but some important elements to complete the IPsec VPN configuration are committed.

## RedundantSortMethod = 1

This XML tag sets the IPsec VPN connection as ping-response based. The VPN will connect to the FortiGate which responds the fastest.

## RedundantSortMethod = 0

By default, RedundantSortMethod = 0, and the IPsec VPN connection is priority based. Priority based configurations will try to connect to the FortiGate starting with the first on the list.

## Priority based SSL VPN connections

SSL VPN supports priority based configurations for redundancy.

```
<forticlient_configuration>
  <vpn>
    <sslvpn>
      <options>
        <enabled>1</enabled>
        ...
      </options>
      <connections>
        <connection>
          <name>ssl_90_1</name>
          <server>10.10.90.1;ssldemo.fortinet.com;172.17.61.143:443</server>
          ...
        </connection>
      </connections>
    </sslvpn>
  </vpn>
</forticlient_configuration>
```

This is a balanced, but incomplete XML configuration fragment. All closing tags are included, but some important elements to complete the SSL VPN configuration are committed.

For SSL VPN, all FortiGates must use the same TCP port.

## Enabling VPN autoconnect

VPN auto connect uses the following XML tag:

```
<autoconnect_tunnel>ipsecdemo.fortinet.com</autoconnect_tunnel>
```

Inside:

```
<vpn>
  <options>
```

Save password is also needed because it is autoconnect:

```
<save_password>1</save_password>
```

## Enabling VPN always up

VPN always up uses the following XML tag:

```
<keep_running>1</keep_running>
```

Inside:

```
<vpn>
```

```
<connection>
```

## Advanced features (Mac OS X)

### Create a redundant IPsec VPN

To use VPN resiliency/redundancy, you will configure a list of FortiGate IP/FQDN servers, instead of just one:

```
<forticlient_configuration>
  <vpn>
    <ipsecvpn>
      <options>
        ...
      </options>
      <connections>
        <connection>
          <name>psk_90_1</name>
          <type>manual</type>
          <ike_settings>
            <prompt_certificate>0</prompt_certificate>
            <server>10.10.90.1;ipsecdemo.fortinet.com;172.17.61.143</server>
            <redundantsortmethod>1</redundantsortmethod>
            ...
          </ike_settings>
        </connection>
      </connections>
    </ipsecvpn>
  </vpn>
</forticlient_configuration>
```

This is a balanced, but incomplete XML configuration fragment. All closing tags are included, but some important elements to complete the IPsec VPN configuration are committed.

#### RedundantSortMethod = 1

This XML tag sets the IPsec VPN connection as ping-response based. The VPN will connect to the FortiGate which responds the fastest.

#### RedundantSortMethod = 0

By default, RedundantSortMethod = 0, and the IPsec VPN connection is priority based. Priority based configurations will try to connect to the FortiGate starting with the first on the list.

### Priority based SSL VPN connections

SSL VPN supports priority based configurations for redundancy.

```
<forticlient_configuration>
  <vpn>
    <sslvpn>
      <options>
        <enabled>1</enabled>
        ...
      </options>
```

```

    <connections>
      <connection>
        <name>ssl_90_1</name>
        <server>10.10.90.1;ssldemo.fortinet.com;172.17.61.143:443</server>
        ...
      </connection>
    </connections>
  </sslvpn>
</vpn>
</forticlient_configuration>

```

This is a balanced, but incomplete XML configuration fragment. All closing tags are included, but some important elements to complete the SSL VPN configuration are committed.

For SSL VPN, all FortiGates must use the same TCP port.

## Enabling VPN autoconnect

VPN auto connect uses the following XML tag:

```
<autoconnect_tunnel>ssl 198 no cert</autoconnect_tunnel>
```

## Enabling VPN always up

VPN always up uses the following XML tag:

```
<keep_running>1</keep_running>
```



VPN before logon is currently not supported in FortiClient v5.0 Patch Release 1 (Mac OS X).

## VPN tunnel & script (Microsoft Windows)

### Feature overview

This feature supports auto running a user-defined script after the configured VPN tunnel is connected or disconnected. The scripts are batch scripts in Windows and shell scripts in Mac OS X. They will be defined as part of a VPN tunnel configuration on FortiGate's XML format Endpoint Profile. The profile will be pushed down to FortiClient from FortiGate. When FortiClient's VPN tunnel is connected or disconnected, the respective script defined under that tunnel will be executed. These scripts can also be configured directly on FortiClient, by importing the XML configuration file.

### Map a network drive after tunnel connection

The script will map a network drive and copy some files after the tunnel is connected.

```

<on_connect>
  <script>
    <os>windows</os>
    <script>
      <script>

```

```

        <![CDATA[
net use x: \\192.168.10.3\ftpshare /user:Honey Boo Boo
md c:\test
copy x:\PDF\*. * c:\test
        ]]>
    </script>
</script>
</script>
</on_connect>

```

## Delete a network drive after tunnel is disconnected

The script will delete the network drive after the tunnel is disconnected.

```

<on_disconnect>
<script>
<os>windows</os>
<script>
<script>
    <![CDATA[
net use x: /DELETE
    ]]>
</script>
</script>
</script>
</on_disconnect>

```

## VPN tunnel & script (Mac OS X)

### Map a network drive after tunnel connection

The script will map a network drive and copy some files after the tunnel is connected.

```

<on_connect>
<script>
<os>mac</os>
<script>
    /bin/mkdir /Volumes/installers
    /sbin/ping -c 4 192.168.1.147 > /Users/admin/Desktop/dropbox/p.txt
    /sbin/mount -t smbfs //kimberly:RigUpTown@ssldemo.fortinet.com/installers
    /Volumes/installers/ > /Users/admin/Desktop/dropbox/m.txt
    /bin/mkdir /Users/admin/Desktop/dropbox/dir
    /bin/cp /Volumes/installers/*.log /Users/admin/Desktop/dropbox/dir/.
</script>
</script>
</on_connect>

```

### Delete a network drive after tunnel is disconnected

The script will delete the network drive after the tunnel is disconnected.

```

<on_disconnect>
<script>
<os>mac</os>

```

```
<script>
  /sbin/umount /Volumes/installers
  /bin/rm -fr /Users/admin/Desktop/dropbox/*
</script>
</script>
</on_disconnect>
```



**FORTINET®**



Copyright© 2018 Fortinet, Inc. All rights reserved. Fortinet®, FortiGate®, FortiCare® and FortiGuard®, and certain other marks are registered trademarks of Fortinet, Inc., in the U.S. and other jurisdictions, and other Fortinet names herein may also be registered and/or common law trademarks of Fortinet. All other product or company names may be trademarks of their respective owners. Performance and other metrics contained herein were attained in internal lab tests under ideal conditions, and actual performance and other results may vary. Network variables, different network environments and other conditions may affect performance results. Nothing herein represents any binding commitment by Fortinet, and Fortinet disclaims all warranties, whether express or implied, except to the extent Fortinet enters a binding written contract, signed by Fortinet's General Counsel, with a purchaser that expressly warrants that the identified product will perform according to certain expressly-identified performance metrics and, in such event, only the specific performance metrics expressly identified in such binding written contract shall be binding on Fortinet. For absolute clarity, any such warranty will be limited to performance in the same ideal conditions as in Fortinet's internal lab tests. In no event does Fortinet make any commitment related to future deliverables, features or development, and circumstances may change such that any forward-looking statements herein are not accurate. Fortinet disclaims in full any covenants, representations, and guarantees pursuant hereto, whether express or implied. Fortinet reserves the right to change, modify, transfer, or otherwise revise this publication without notice, and the most current version of the publication shall be applicable.